

# Ruwac USA Industrial Vacuums

## DS1 Standard Series

### Parts Manual

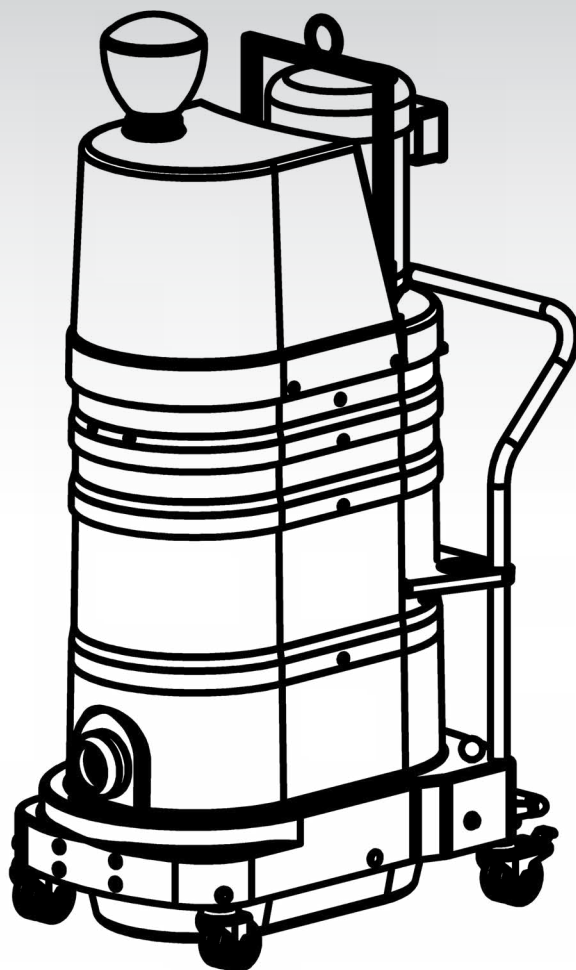
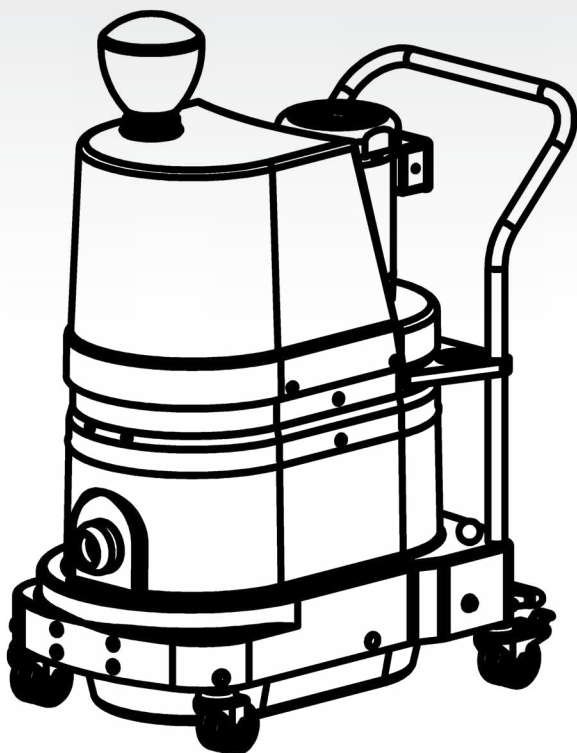
---

Model No.

Serial No.

Filter No.

Start-Up Date

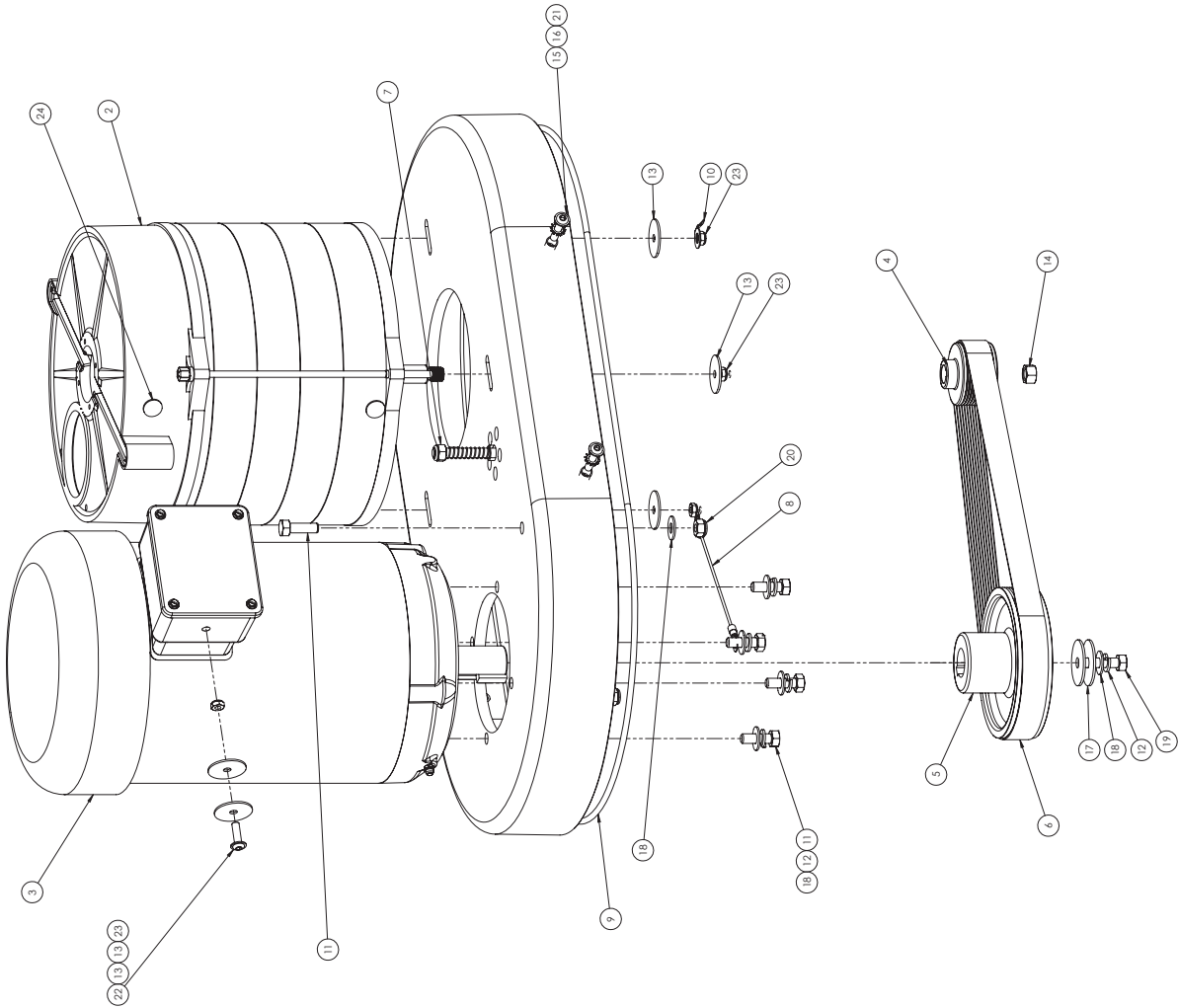


Version: 2.4 1/5/18





REVISIONS			
ZONE	REV.	DESCRIPTION	DATE
	D	ECO 135 PRINT REVISED	8/1/2007
	E	ECO 435 PRINT REVISED	12/1/2006
	F	ECO 135 PRINT REVISED	8/1/2006
	G	ECO 1371 CHANGED GASKET ADDED ELECTRICAL BOX	8/1/2007
	H	ECO 1369 ADDED 2250 PLUGS TO DRAWING, CHANGED TURBINE HARDWARE FROM 20040 TO 34876	9/6/2007
	J	ECO 1414 TURBINE MOTOR V0*	10/18/2017

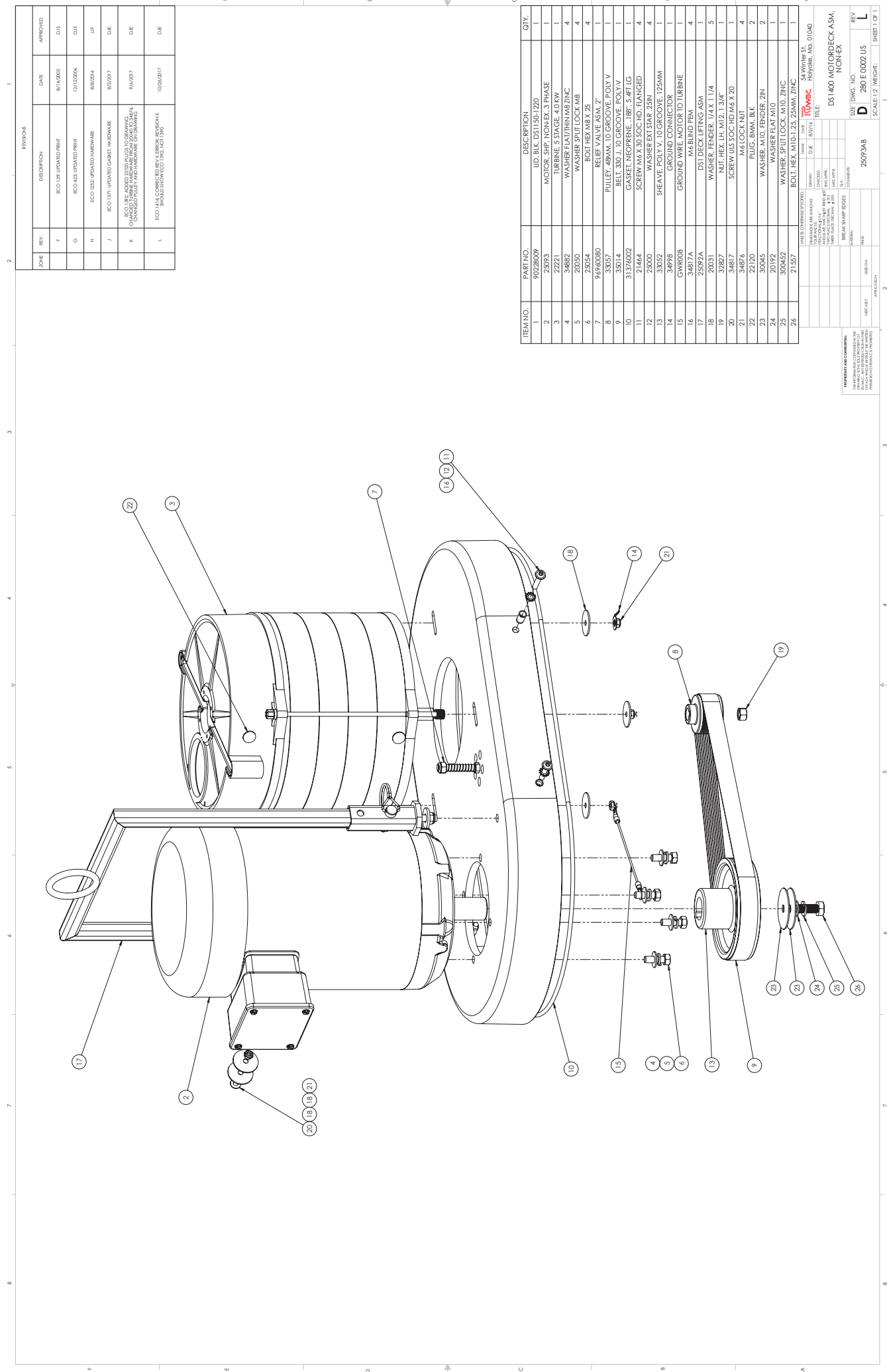


ITEM NO.	PART NO.	DESCRIPTION	QTY.
1	9028009	L.D. BLK. DS11.50.1220	1
2	22220	TURBINE, 3 STAGE, 22 KW	1
3	25006	MOTOR, 3HP, NON-EX, 3 PHASE	1
4	33059	PILLEY, 52MM, 10 GROOVE, POLY V	1
5	33051	SHEAVE, 125MM, 10 GROOVE	1
6	33014	BELT, 330 J, 10 GROOVE, POLY-V	1
7	96940080	RELIF VALVE ASM, 2"	1
8	GWR008	GROUND WIRE, MOTOR TO TURBINE	1
9	31376002	GASKET, NEOPRENE, 188", 5.4FT LG	1
10	34998	GROUND CONNECTOR	1
11	25054	BOLT, HEX M8 X 25	6
12	31206	WASHER, FENDER, 5/16	5
13	20031	WASHER, FENDER, 1/4 X 1 1/4	5
14	32827	NUT, HEX, LH, M2, 1.3/4"	1
15	21464	SCREW M6 X 30.50C HD, FLANGED	4
16	25000	WASHER EX, STAR, 28IN	4
17	20032	WASHER, FENDER, 5/16-1 1/2", ZINC	2
18	34862	WASHER FLAT/HHN M8 ZINC	7
19	25031	BOLT, HEX M8 X 30	1
20	33029	NUT, LOCK M8	2
21	34817A	M8 BIRD FEET	4
22	34876	SCREW, PLUG, 1/2" X 3/8" M8 X 20	4
23	34876	SCREW, PLUG, 1/2" X 3/8" M8 X 20	4
24	22120	PLUG, BUNA, BLK	2

DATE 8/1/12		DATE 8/1/12		DATE 8/1/12	
DESIGNED		DESIGNED		DESIGNED	
CHECKED		CHECKED		CHECKED	
APPROVED		APPROVED		APPROVED	
DATE		DATE		DATE	
DESIGNED		DESIGNED		DESIGNED	
CHECKED		CHECKED		CHECKED	
APPROVED		APPROVED		APPROVED	
DATE		DATE		DATE	
DESIGNED		DESIGNED		DESIGNED	
CHECKED		CHECKED		CHECKED	
APPROVED		APPROVED		APPROVED	
DATE		DATE		DATE	
DESIGNED		DESIGNED		DESIGNED	
CHECKED		CHECKED		CHECKED	
APPROVED		APPROVED		APPROVED	
DATE		DATE		DATE	
DESIGNED		DESIGNED		DESIGNED	
CHECKED		CHECKED		CHECKED	
APPROVED		APPROVED		APPROVED	
DATE		DATE		DATE	
DESIGNED		DESIGNED		DESIGNED	
CHECKED		CHECKED		CHECKED	
APPROVED		APPROVED		APPROVED	
DATE		DATE		DATE	
DESIGNED		DESIGNED		DESIGNED	
CHECKED		CHECKED		CHECKED	
APPROVED		APPROVED		APPROVED	
DATE		DATE		DATE	
DESIGNED		DESIGNED		DESIGNED	
CHECKED		CHECKED		CHECKED	
APPROVED		APPROVED		APPROVED	
DATE		DATE		DATE	
DESIGNED		DESIGNED		DESIGNED	
CHECKED		CHECKED		CHECKED	
APPROVED		APPROVED		APPROVED	
DATE		DATE		DATE	
DESIGNED		DESIGNED		DESIGNED	
CHECKED		CHECKED		CHECKED	
APPROVED		APPROVED		APPROVED	
DATE		DATE		DATE	
DESIGNED		DESIGNED		DESIGNED	
CHECKED		CHECKED		CHECKED	
APPROVED		APPROVED		APPROVED	
DATE		DATE		DATE	
DESIGNED		DESIGNED		DESIGNED	
CHECKED		CHECKED		CHECKED	
APPROVED		APPROVED		APPROVED	
DATE		DATE		DATE	
DESIGNED		DESIGNED		DESIGNED	
CHECKED		CHECKED		CHECKED	
APPROVED		APPROVED		APPROVED	
DATE		DATE		DATE	
DESIGNED		DESIGNED		DESIGNED	
CHECKED		CHECKED		CHECKED	
APPROVED		APPROVED		APPROVED	
DATE		DATE		DATE	
DESIGNED		DESIGNED		DESIGNED	
CHECKED		CHECKED		CHECKED	
APPROVED		APPROVED		APPROVED	
DATE		DATE		DATE	
DESIGNED		DESIGNED		DESIGNED	
CHECKED		CHECKED		CHECKED	
APPROVED		APPROVED		APPROVED	
DATE		DATE		DATE	
DESIGNED		DESIGNED		DESIGNED	
CHECKED		CHECKED		CHECKED	
APPROVED		APPROVED		APPROVED	
DATE		DATE		DATE	
DESIGNED		DESIGNED		DESIGNED	
CHECKED		CHECKED		CHECKED	
APPROVED		APPROVED		APPROVED	
DATE		DATE		DATE	
DESIGNED		DESIGNED		DESIGNED	
CHECKED		CHECKED		CHECKED	
APPROVED		APPROVED		APPROVED	
DATE		DATE		DATE	
DESIGNED		DESIGNED		DESIGNED	
CHECKED		CHECKED		CHECKED	
APPROVED		APPROVED		APPROVED	
DATE		DATE		DATE	
DESIGNED		DESIGNED		DESIGNED	
CHECKED		CHECKED		CHECKED	
APPROVED		APPROVED		APPROVED	
DATE		DATE		DATE	
DESIGNED		DESIGNED		DESIGNED	
CHECKED		CHECKED		CHECKED	
APPROVED		APPROVED		APPROVED	
DATE		DATE		DATE	
DESIGNED		DESIGNED		DESIGNED	
CHECKED		CHECKED		CHECKED	
APPROVED		APPROVED		APPROVED	
DATE		DATE		DATE	
DESIGNED		DESIGNED		DESIGNED	
CHECKED		CHECKED		CHECKED	
APPROVED		APPROVED		APPROVED	
DATE		DATE		DATE	
DESIGNED		DESIGNED		DESIGNED	
CHECKED		CHECKED		CHECKED	
APPROVED		APPROVED		APPROVED	
DATE		DATE		DATE	
DESIGNED		DESIGNED		DESIGNED	
CHECKED		CHECKED		CHECKED	
APPROVED		APPROVED		APPROVED	
DATE		DATE		DATE	
DESIGNED		DESIGNED		DESIGNED	
CHECKED		CHECKED		CHECKED	
APPROVED		APPROVED		APPROVED	
DATE		DATE		DATE	
DESIGNED		DESIGNED		DESIGNED	
CHECKED		CHECKED		CHECKED	
APPROVED		APPROVED		APPROVED	
DATE		DATE		DATE	
DESIGNED		DESIGNED		DESIGNED	
CHECKED		CHECKED		CHECKED	
APPROVED		APPROVED		APPROVED	
DATE		DATE		DATE	
DESIGNED		DESIGNED		DESIGNED	
CHECKED		CHECKED		CHECKED	
APPROVED		APPROVED		APPROVED	
DATE		DATE		DATE	
DESIGNED		DESIGNED		DESIGNED	
CHECKED		CHECKED		CHECKED	
APPROVED		APPROVED		APPROVED	
DATE		DATE		DATE	
DESIGNED		DESIGNED		DESIGNED	
CHECKED		CHECKED		CHECKED	
APPROVED		APPROVED		APPROVED	
DATE		DATE		DATE	
DESIGNED		DESIGNED		DESIGNED	
CHECKED		CHECKED		CHECKED	
APPROVED		APPROVED		APPROVED	
DATE		DATE		DATE	
DESIGNED		DESIGNED		DESIGNED	
CHECKED		CHECKED		CHECKED	
APPROVED		APPROVED		APPROVED	
DATE		DATE		DATE	
DESIGNED		DESIGNED		DESIGNED	
CHECKED		CHECKED		CHECKED	
APPROVED		APPROVED		APPROVED	
DATE		DATE		DATE	
DESIGNED		DESIGNED		DESIGNED	
CHECKED		CHECKED		CHECKED	
APPROVED		APPROVED		APPROVED	
DATE		DATE		DATE	
DESIGNED		DESIGNED		DESIGNED	
CHECKED		CHECKED		CHECKED	
APPROVED		APPROVED		APPROVED	
DATE		DATE		DATE	
DESIGNED		DESIGNED		DESIGNED	
CHECKED		CHECKED		CHECKED	
APPROVED		APPROVED		APPROVED	
DATE		DATE		DATE	
DESIGNED		DESIGNED		DESIGNED	
CHECKED		CHECKED		CHECKED	
APPROVED		APPROVED		APPROVED	
DATE		DATE		DATE	
DESIGNED		DESIGNED		DESIGNED	
CHECKED		CHECKED		CHECKED	
APPROVED		APPROVED		APPROVED	
DATE		DATE		DATE	
DESIGNED		DESIGNED		DESIGNED	
CHECKED		CHECKED		CHECKED	
APPROVED		APPROVED		APPROVED	
DATE		DATE		DATE	
DESIGNED		DESIGNED		DESIGNED	
CHECKED		CHECKED		CHECKED	
APPROVED		APPROVED		APPROVED	
DATE		DATE		DATE	
DESIGNED		DESIGNED		DESIGNED	
CHECKED		CHECKED		CHECKED	
APPROVED		APPROVED		APPROVED	
DATE		DATE		DATE	
DESIGNED		DESIGNED		DESIGNED	
CHECKED		CHECKED		CHECKED	
APPROVED		APPROVED		APPROVED	
DATE		DATE		DATE	
DESIGNED		DESIGNED		DESIGNED	
CHECKED		CHECKED		CHECKED	
APPROVED		APPROVED		APPROVED	
DATE		DATE		DATE	
DESIGNED		DESIGNED		DESIGNED	
CHECKED		CHECKED		CHECKED	
APPROVED		APPROVED		APPROVED	
DATE		DATE		DATE	
DESIGNED		DESIGNED		DESIGNED	
CHECKED		CHECKED		CHECKED	
APPROVED		APPROVED		APPROVED	
DATE		DATE		DATE	
DESIGNED		DESIGNED		DESIGNED	
CHECKED		CHECKED		CHECKED	
APPROVED		APPROVED		APPROVED	
DATE		DATE		DATE	
DESIGNED		DESIGNED		DESIGNED	
CHECKED		CHECKED		CHECKED	
APPROVED		APPROVED		APPROVED	
DATE		DATE		DATE	
DESIGNED		DESIGNED		DESIGNED	
CHECKED		CHECKED		CHECKED	
APPROVED		APPROVED		APPROVED	
DATE		DATE		DATE	
DESIGNED		DESIGNED		DESIGNED	
CHECKED		CHECKED		CHECKED	
APPROVED		APPROVED		APPROVED	
DATE		DATE		DATE	
DESIGNED		DESIGNED		DESIGNED	
CHECKED		CHECKED		CHECKED	
APPROVED		APPROVED		APPROVED	
DATE		DATE		DATE	
DESIGNED		DESIGNED		DESIGNED	
CHECKED		CHECKED		CHECKED	
APPROVED		APPROVED		APPROVED	
DATE		DATE		DATE	
DESIGNED		DESIGNED		DESIGNED	
CHECKED		CHECKED		CHECKED	
APPROVED		APPROVED		APPROVED	
DATE		DATE		DATE	
DESIGNED		DESIGNED		DESIGNED	
CHECKED		CHECKED		CHECKED	
APPROVED		APPROVED		APPROVED	
DATE		DATE		DATE	
DESIGNED		DESIGNED		DESIGNED	
CHECKED		CHECKED		CHECKED	
APPROVED		APPROVED		APPROVED	
DATE		DATE		DATE	
DESIGNED		DESIGNED		DESIGNED	
CHECKED		CHECKED		CHECKED	
APPROVED		APPROVED		APPROVED	
DATE		DATE		DATE	
DESIGNED		DESIGNED		DESIGNED	
CHECKED		CHECKED		CHECKED	
APPROVED		APPROVED		APPROVED	
DATE		DATE		DATE	
DESIGNED		DESIGNED		DESIGNED	
CHECKED		CHECKED		CHECKED	
APPROVED		APPROVED		APPROVED	
DATE		DATE		DATE	
DESIGNED		DESIGNED		DESIGNED	
CHECKED		CHECKED		CHECKED	
APPROVED		APPROVED		APPROVED	
DATE		DATE		DATE	
DESIGNED		DESIGNED		DESIGNED	
CHECKED		CHECKED		CHECKED	
APPROVED		APPROVED		APPROVED	
DATE		DATE		DATE	
DESIGNED		DESIGNED		DESIGNED	
CHECKED		CHECKED		CHECKED	
APPROVED		APPROVED		APPROVED	
DATE		DATE		DATE	
DESIGNED		DESIGNED		DESIGNED	
CHECKED		CHECKED		CHECKED	
APPROVED		APPROVED		APPROVED	
DATE		DATE		DATE	
DESIGNED		DESIGNED		DESIGNED	
CHECKED		CHECKED		CHECKED	
APPROVED		APPROVED		APPROVED	
DATE		DATE		DATE	
DESIGNED		DESIGNED		DESIGNED	
CHECKED		CHECKED		CHECKED	
APPROVED		APPROVED		APPROVED	
DATE		DATE		DATE	
DESIGNED		DESIGNED		DESIGNED	
CHECKED		CHECKED		CHECKED	
APPROVED		APPROVED		APPROVED	
DATE		DATE		DATE	
DESIGNED		DESIGNED		DESIGNED	
CHECKED		CHECKED		CHECKED	
APPROVED		APPROVED		APPROVED	
DATE		DATE		DATE	
DESIGNED		DESIGNED		DESIGNED	
CHECKED		CHECKED		CHECKED	
APPROVED		APPROVED		APPROVED	
DATE		DATE		DATE	
DESIGNED		DESIGNED		DESIGNED	
CHECKED		CHECKED		CHECKED	
APPROVED		APPROVED		APPROVED	
DATE		DATE		DATE	
DESIGNED		DESIGNED		DESIGNED	
CHECKED		CHECKED		CHECKED	
APPROVED		APPROVED		APPROVED	
DATE		DATE		DATE	
DESIGNED		DESIGNED		DESIGNED	
CHECKED		CHECKED		CHECKED	
APPROVED		APPROVED		APPROVED	
DATE		DATE		DATE	
DESIGNED		DESIGNED		DESIGNED	
CHECKED		CHECKED		CHECKED	
APPROVED		APPROVED		APPROVED	
DATE		DATE		DATE	
DESIGNED		DESIGNED		DESIGNED	
CHECKED		CHECKED		CHECKED	
APPROVED		APPROVED		APPROVED	
DATE		DATE		DATE	
DESIGNED		DESIGNED		DESIGNED	
CHECKED		CHECKED		CHECKED	
APPROVED		APPROVED		APPROVED	
DATE		DATE		DATE	
DESIGNED		DESIGNED		DESIGNED	
CHECKED		CHECKED		CHECKED	
APPROVED		APPROVED		APPROVED	
DATE		DATE		DATE	
DESIGNED		DESIGNED		DESIGNED	
CHECKED		CHECKED		CHECKED	
APPROVED		APPROVED		APPROVED	
DATE		DATE		DATE	
DESIGNED		DESIGNED		DESIGNED	
CHECKED		CHECKED		CHECKED	
APPROVED		APPROVED		APPROVED	
DATE		DATE		DATE	
DESIGNED		DESIGNED		DESIGNED	
CHECKED		CHECKED		CHECKED	
APPROVED		APPROVED		APPROVED	
DATE		DATE		DATE	
DESIGNED		DESIGNED		DESIGNED	
CHECKED		CHECKED		CHECKED	
APPROVED		APPROVED		APPROVED	
DATE		DATE		DATE	
DESIGNED		DESIGNED		DESIGNED	
CHECKED		CHECKED		CHECKED	
APPROVED		APPROVED		APPROVED	
DATE		DATE		DATE	
DESIGNED		DESIGNED		DESIGNED	
CHECKED		CHECKED		CHECKED	
APPROVED		APPROVED		APPROVED	
DATE		DATE		DATE	
DESIGNED		DESIGNED		DESIGNED	
CHECKED		CHECKED		CHECKED	
APPROVED		APPROVED		APPROVED	
DATE		DATE		DATE	
DESIGNED		DESIGNED		DESIGNED	
CHECKED		CHECKED		CHECKED	
APPROVED		APPROVED		APPROVED	
DATE		DATE		DATE	
DESIGNED		DESIGNED		DESIGNED	
CHECKED					







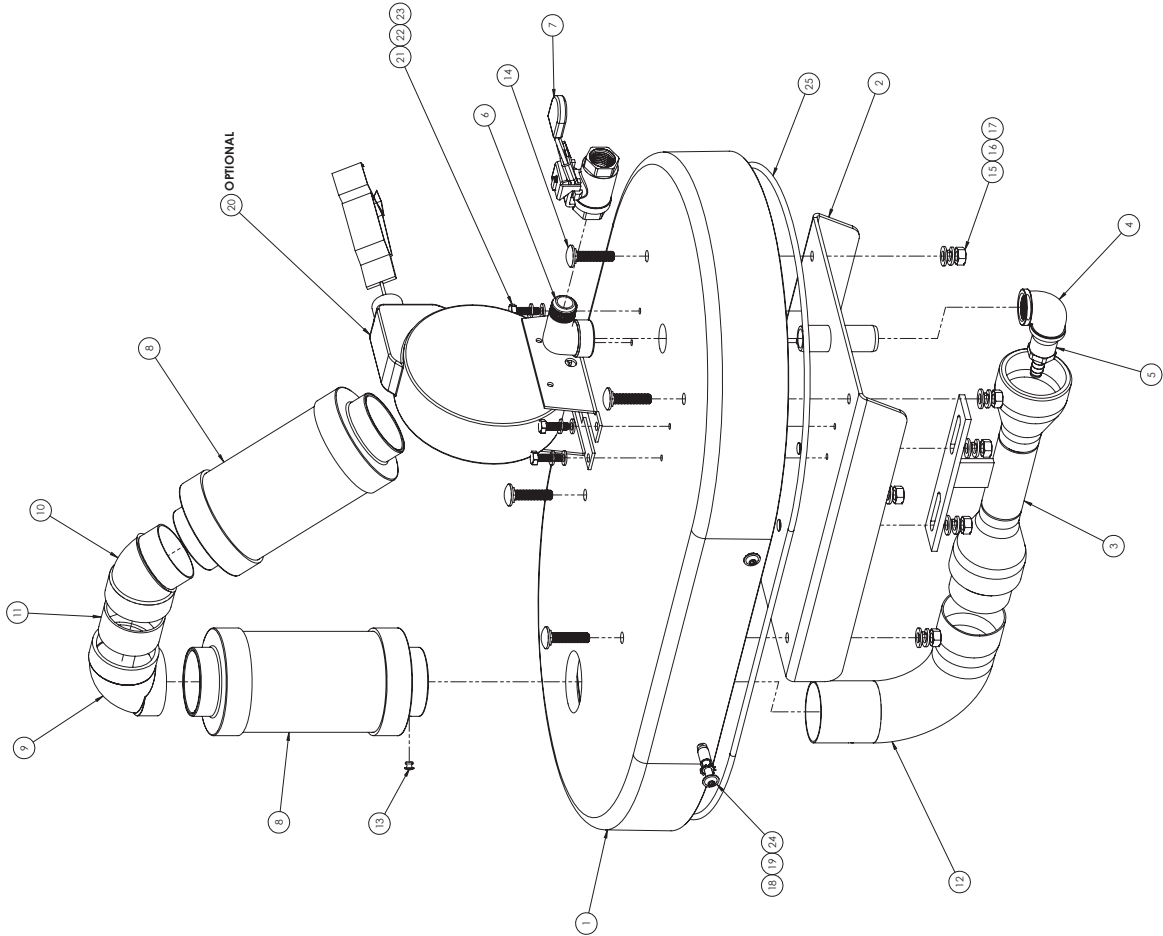
ITEM NO.	PART NO.	DESCRIPTION	QTY.
1	9422809	UD BLK DSI 150-120	1
2	22205	MOBILE PLATE	1
3	22202	U-BOLTS 5/16" X 3" CW	1
4	34682	WASHER FLAT 1/4" X 1/2" X 3/16"	4
5	20550	WASHER SPIRIT LOCK M8	4
6	22554	BOLT HEX M8 X 25	4
7	9496080	RELIEF VALVE ASV 2"	1
8	33057	PULLEY 48MM, 10 GROOVE, POLY V	1
9	33051	BELT 330 X 10 GROOVE, POLY V	1
10	31376002	GASKET, NEOPRENE .188" 5.4FT LG	1
11	21464	M4 X 3.0 SOC HD, FLANGED	4
12	23000	WASHER EXT STAR .23IN	4
13	33052	SHEAVE POLY V, 10 GROOVE, 125MM	1
14	34998	GROUND CONNECTOR	1
15	GWR008	GROUND WIRE, MOTOR TO TURBINE	1
16	34817A	M4 BLIND RIM	4
17	25097A	DST DECK LIFT ASM	1
18	20031	WASHER, FENDER, 1/4X 1 1/4	5
19	32827	NUD. HEX. LH, M12, 1 3/4"	1
20	34817	SCREW US SOC HD M4 X 20	1
21	34876	M6 LOCK NUT	4
22	22100	FLUG 8MM, 1/2"	1
23	20555	WASHER FLAT 1/4" X 1/2" X 3/16"	2
24	20191P	WASHER FLAT 1/4" X 1/2" X 3/16"	1
25	300452	WASHER SPIRIT LOCK M10, 2IN	1
26	21552	ROLL HEX M12 X 25 29MM 2IN	1

THE INFORMATION CONTAINED IN THIS DRAWING IS THE SOLE PROPERTY OF RUWAC. ANY REPRODUCTION IN PART OR AS A WHOLE WITHOUT THE WRITTEN PERMISSIO FROM RUWAC IS PROHIBITED.





REVISIONS			
ZONE	REV.	DESCRIPTION	DATE
	J	ECO 787	3/1/71
	K	ECO 954	5/16/72
	L	UPDATED DRAWINGS PER ECO 1286	11/29/74
	M	ECO 1371 CHANGED GASKET	8/7/90 7



ITEM NO.	PART NO.	DESCRIPTION	QTY.
1	90228-1	MOTORDECK FOR AV1000, BLK	1
2	31808	AIR VAC PLATE, SINGLE VENTURI, AV1000	1
3	31643	AIR VENTURI	1
4	31623	ELBOW, 90, 0.5IN, BRASS	1
5	31623	HOSE BARB, .375 X .5INPT, BRASS	1
6	31675S	ELBOW, 90, STREET, .5INPT SS	1
7	31624	BALL VALVE, .5IN, FULL PORT, BRASS	1
8	C7802350	EXHAUST MUFFLER, 6IN	2
9	C7701585	ELBOW, 2IN, 90, PVC	1
10	C7701588	STREET ELBOW, .45, 2IN, PVC	1
11	C7701403	TUBING, 2IN, PVC	2
12	9018331	ELBOW, 90, 2IN, SS, FOR AV	1
13	3299001	RIVET, BLIND, .25 LONG	2
14	25030	CARRIAGE BOLT M8-30, ZINC	4
15	20044	HEX NUT M8, ZINC	6
16	20050	WASHER SPLIT LOCK W8	6
17	25061	M8 FLAT WASHER	6
18	34817A	M8 BLIND FEM	4
19	25000	WASHER EXT STAR 25IN	4
20	34878	GROUNDING REEL	1
21	32903	BOLT HEX M6-20, ZINC	4
22	20039	WASHER LOCK W6	4
23	22867	WASHER FLAT W6	4
24	3187001	SCREEN SOCKET, 1/2IN, 1/4IN	4
25	31976002	CONNET, HOSE, 1/2IN, 1/4IN	1

DATE	3/1/71	BY	SA
DESIGNED		CHECKED	
APPROVED		DATE	11/29/74
TITLE	ECO 954		
SCALE	1:1		
REVISIONS			
NO.	DATE	DESCRIPTION	BY
1	3/1/71	ECO 954	SA
2	5/16/72	ECO 954	SA
3	11/29/74	ECO 1286	SA
4	8/7/90	ECO 1371	SA

FOR INFORMATION ONLY: THIS DRAWING IS NOT TO BE USED FOR CONSTRUCTION OF THE PRODUCT WITHOUT THE WRITTEN PERMISSION OF THE COMPANY.

AV1000, MOTORDECK ASM  
 SIZE DWG. NO.  
 D 000 E 0054 US  
 SCALE: 1:2 (WEIGHT)  
 SHEET 1 OF 1

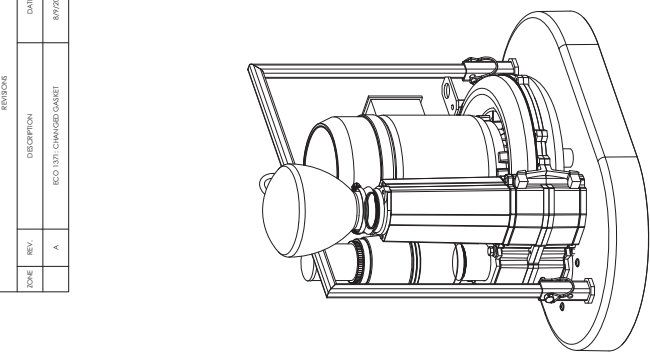








REVISIONS			
ZONE	REV.	DESCRIPTION	DATE
	A	ECO 1371 CHANGES GASKET	8/9/2027
			DUE



ITEM NO.	PART NO.	DESCRIPTION	QTY.
1	90228007	DSI MOTORDECK LID, BLK, 15-M5 REGEN MOUNT	1
2	45100	REGEN VPK50 2HP, VERT MOUNT	1
3	96981	RELIEF VALVE, 2", ADJUSTABLE	1
4	1002210	RELIEF VALVE, 2", SCREEN ADAPTER	1
5	279221	NIPPLE 2X2, ONE END, STEEL	1
6	30058	AIR DIFFUSER BAG DSI LID	1
7	4019	HOSE CLAMP 2.31" X 2.25", SS	1
8	31374002	GASKET, NEOPRENE, .188", 5.4FT LG	1
9	60210C	DECK MOUNT WELDMENT	2
10	60210C	REMOVABLE LIFTING BAR, DS2/GV	1
11	45500A	ADAPTER PLATE/NIPPLE WELDMENT	1
12	2006253	GAGE VACUUM, -0.160"WC, 2.5" DIA, SS	1
13	45500D	ADAPTER PLATE/PIPE WELDMENT	1
14	2509801	GASKET, ROUND, 3/8", CUT AT 8.625"	1
15	25029	RETAINER PIN	2
16	91281	VIBRATION MOUNT M8	3
17	34862	WASHER FLAT/THIN M8 ZINC	9
18	30029	NUT LOCK M8	2
19	25031	BOLT HEX M8 X 3.0	2
20	2177701	PROTECTION SCREEN-S X 5"	1
21	34876	M6 LOCK NUT	4
22	34817	WASHER FLAT M6	4
23	30017	SCREW US 6-32 X 1.5 X 20	4
24	25038	BOLT HEX M8 X 2.0	7
25	20050	WASHER SPRIT LOCK M8	7

UNLESS OTHERWISE SPECIFIED:		UNITS	DATE	SALES	54 WINTER ST.
DIMENSIONS ARE IN INCHES		DECIMALS	DRAWN		HOYLE, AAS, 01040
FRACTIONS ARE IN 16THS		DECIMALS	DESIGNED		
TOLERANCES ARE:		FRACTIONS	FINISH		
HOLE DIA. 1/16" & OVER		±.005	AS SUPPLIED		
HOLE DIA. 1/8" & OVER		±.005	AS SUPPLIED		
HOLE DIA. 1/4" & OVER		±.005	AS SUPPLIED		
HOLE DIA. 3/8" & OVER		±.005	AS SUPPLIED		
HOLE DIA. 1/2" & OVER		±.005	AS SUPPLIED		
HOLE DIA. 3/4" & OVER		±.005	AS SUPPLIED		
HOLE DIA. 1" & OVER		±.005	AS SUPPLIED		
HOLE DIA. 1 1/4" & OVER		±.005	AS SUPPLIED		
HOLE DIA. 1 1/2" & OVER		±.005	AS SUPPLIED		
HOLE DIA. 1 3/4" & OVER		±.005	AS SUPPLIED		
HOLE DIA. 2" & OVER		±.005	AS SUPPLIED		
HOLE DIA. 2 1/4" & OVER		±.005	AS SUPPLIED		
HOLE DIA. 2 1/2" & OVER		±.005	AS SUPPLIED		
HOLE DIA. 2 3/4" & OVER		±.005	AS SUPPLIED		
HOLE DIA. 3" & OVER		±.005	AS SUPPLIED		
HOLE DIA. 3 1/4" & OVER		±.005	AS SUPPLIED		
HOLE DIA. 3 1/2" & OVER		±.005	AS SUPPLIED		
HOLE DIA. 3 3/4" & OVER		±.005	AS SUPPLIED		
HOLE DIA. 4" & OVER		±.005	AS SUPPLIED		
HOLE DIA. 4 1/4" & OVER		±.005	AS SUPPLIED		
HOLE DIA. 4 1/2" & OVER		±.005	AS SUPPLIED		
HOLE DIA. 4 3/4" & OVER		±.005	AS SUPPLIED		
HOLE DIA. 5" & OVER		±.005	AS SUPPLIED		
HOLE DIA. 5 1/4" & OVER		±.005	AS SUPPLIED		
HOLE DIA. 5 1/2" & OVER		±.005	AS SUPPLIED		
HOLE DIA. 5 3/4" & OVER		±.005	AS SUPPLIED		
HOLE DIA. 6" & OVER		±.005	AS SUPPLIED		
HOLE DIA. 6 1/4" & OVER		±.005	AS SUPPLIED		
HOLE DIA. 6 1/2" & OVER		±.005	AS SUPPLIED		
HOLE DIA. 6 3/4" & OVER		±.005	AS SUPPLIED		
HOLE DIA. 7" & OVER		±.005	AS SUPPLIED		
HOLE DIA. 7 1/4" & OVER		±.005	AS SUPPLIED		
HOLE DIA. 7 1/2" & OVER		±.005	AS SUPPLIED		
HOLE DIA. 7 3/4" & OVER		±.005	AS SUPPLIED		
HOLE DIA. 8" & OVER		±.005	AS SUPPLIED		
HOLE DIA. 8 1/4" & OVER		±.005	AS SUPPLIED		
HOLE DIA. 8 1/2" & OVER		±.005	AS SUPPLIED		
HOLE DIA. 8 3/4" & OVER		±.005	AS SUPPLIED		
HOLE DIA. 9" & OVER		±.005	AS SUPPLIED		
HOLE DIA. 9 1/4" & OVER		±.005	AS SUPPLIED		
HOLE DIA. 9 1/2" & OVER		±.005	AS SUPPLIED		
HOLE DIA. 9 3/4" & OVER		±.005	AS SUPPLIED		
HOLE DIA. 10" & OVER		±.005	AS SUPPLIED		
HOLE DIA. 10 1/4" & OVER		±.005	AS SUPPLIED		
HOLE DIA. 10 1/2" & OVER		±.005	AS SUPPLIED		
HOLE DIA. 10 3/4" & OVER		±.005	AS SUPPLIED		
HOLE DIA. 11" & OVER		±.005	AS SUPPLIED		
HOLE DIA. 11 1/4" & OVER		±.005	AS SUPPLIED		
HOLE DIA. 11 1/2" & OVER		±.005	AS SUPPLIED		
HOLE DIA. 11 3/4" & OVER		±.005	AS SUPPLIED		
HOLE DIA. 12" & OVER		±.005	AS SUPPLIED		
HOLE DIA. 12 1/4" & OVER		±.005	AS SUPPLIED		
HOLE DIA. 12 1/2" & OVER		±.005	AS SUPPLIED		
HOLE DIA. 12 3/4" & OVER		±.005	AS SUPPLIED		
HOLE DIA. 13" & OVER		±.005	AS SUPPLIED		
HOLE DIA. 13 1/4" & OVER		±.005	AS SUPPLIED		
HOLE DIA. 13 1/2" & OVER		±.005	AS SUPPLIED		
HOLE DIA. 13 3/4" & OVER		±.005	AS SUPPLIED		
HOLE DIA. 14" & OVER		±.005	AS SUPPLIED		
HOLE DIA. 14 1/4" & OVER		±.005	AS SUPPLIED		
HOLE DIA. 14 1/2" & OVER		±.005	AS SUPPLIED		
HOLE DIA. 14 3/4" & OVER		±.005	AS SUPPLIED		
HOLE DIA. 15" & OVER		±.005	AS SUPPLIED		
HOLE DIA. 15 1/4" & OVER		±.005	AS SUPPLIED		
HOLE DIA. 15 1/2" & OVER		±.005	AS SUPPLIED		
HOLE DIA. 15 3/4" & OVER		±.005	AS SUPPLIED		
HOLE DIA. 16" & OVER		±.005	AS SUPPLIED		
HOLE DIA. 16 1/4" & OVER		±.005	AS SUPPLIED		
HOLE DIA. 16 1/2" & OVER		±.005	AS SUPPLIED		
HOLE DIA. 16 3/4" & OVER		±.005	AS SUPPLIED		
HOLE DIA. 17" & OVER		±.005	AS SUPPLIED		
HOLE DIA. 17 1/4" & OVER		±.005	AS SUPPLIED		
HOLE DIA. 17 1/2" & OVER		±.005	AS SUPPLIED		
HOLE DIA. 17 3/4" & OVER		±.005	AS SUPPLIED		
HOLE DIA. 18" & OVER		±.005	AS SUPPLIED		
HOLE DIA. 18 1/4" & OVER		±.005	AS SUPPLIED		
HOLE DIA. 18 1/2" & OVER		±.005	AS SUPPLIED		
HOLE DIA. 18 3/4" & OVER		±.005	AS SUPPLIED		
HOLE DIA. 19" & OVER		±.005	AS SUPPLIED		
HOLE DIA. 19 1/4" & OVER		±.005	AS SUPPLIED		
HOLE DIA. 19 1/2" & OVER		±.005	AS SUPPLIED		
HOLE DIA. 19 3/4" & OVER		±.005	AS SUPPLIED		
HOLE DIA. 20" & OVER		±.005	AS SUPPLIED		
HOLE DIA. 20 1/4" & OVER		±.005	AS SUPPLIED		
HOLE DIA. 20 1/2" & OVER		±.005	AS SUPPLIED		
HOLE DIA. 20 3/4" & OVER		±.005	AS SUPPLIED		
HOLE DIA. 21" & OVER		±.005	AS SUPPLIED		
HOLE DIA. 21 1/4" & OVER		±.005	AS SUPPLIED		
HOLE DIA. 21 1/2" & OVER		±.005	AS SUPPLIED		
HOLE DIA. 21 3/4" & OVER		±.005	AS SUPPLIED		
HOLE DIA. 22" & OVER		±.005	AS SUPPLIED		
HOLE DIA. 22 1/4" & OVER		±.005	AS SUPPLIED		
HOLE DIA. 22 1/2" & OVER		±.005	AS SUPPLIED		
HOLE DIA. 22 3/4" & OVER		±.005	AS SUPPLIED		
HOLE DIA. 23" & OVER		±.005	AS SUPPLIED		
HOLE DIA. 23 1/4" & OVER		±.005	AS SUPPLIED		
HOLE DIA. 23 1/2" & OVER		±.005	AS SUPPLIED		
HOLE DIA. 23 3/4" & OVER		±.005	AS SUPPLIED		
HOLE DIA. 24" & OVER		±.005	AS SUPPLIED		
HOLE DIA. 24 1/4" & OVER		±.005	AS SUPPLIED		
HOLE DIA. 24 1/2" & OVER		±.005	AS SUPPLIED		
HOLE DIA. 24 3/4" & OVER		±.005	AS SUPPLIED		
HOLE DIA. 25" & OVER		±.005	AS SUPPLIED		
HOLE DIA. 25 1/4" & OVER		±.005	AS SUPPLIED		
HOLE DIA. 25 1/2" & OVER		±.005	AS SUPPLIED		
HOLE DIA. 25 3/4" & OVER		±.005	AS SUPPLIED		
HOLE DIA. 26" & OVER		±.005	AS SUPPLIED		
HOLE DIA. 26 1/4" & OVER		±.005	AS SUPPLIED		
HOLE DIA. 26 1/2" & OVER		±.005	AS SUPPLIED		
HOLE DIA. 26 3/4" & OVER		±.005	AS SUPPLIED		
HOLE DIA. 27" & OVER		±.005	AS SUPPLIED		
HOLE DIA. 27 1/4" & OVER		±.005	AS SUPPLIED		
HOLE DIA. 27 1/2" & OVER		±.005	AS SUPPLIED		
HOLE DIA. 27 3/4" & OVER		±.005	AS SUPPLIED		
HOLE DIA. 28" & OVER		±.005	AS SUPPLIED		
HOLE DIA. 28 1/4" & OVER		±.005	AS SUPPLIED		
HOLE DIA. 28 1/2" & OVER		±.005	AS SUPPLIED		
HOLE DIA. 28 3/4" & OVER		±.005	AS SUPPLIED		
HOLE DIA. 29" & OVER		±.005	AS SUPPLIED		
HOLE DIA. 29 1/4" & OVER		±.005	AS SUPPLIED		
HOLE DIA. 29 1/2" & OVER		±.005	AS SUPPLIED		
HOLE DIA. 29 3/4" & OVER		±.005	AS SUPPLIED		
HOLE DIA. 30" & OVER		±.005	AS SUPPLIED		
HOLE DIA. 30 1/4" & OVER		±.005	AS SUPPLIED		
HOLE DIA. 30 1/2" & OVER		±.005	AS SUPPLIED		
HOLE DIA. 30 3/4" & OVER		±.005	AS SUPPLIED		
HOLE DIA. 31" & OVER		±.005	AS SUPPLIED		
HOLE DIA. 31 1/4" & OVER		±.005	AS SUPPLIED		
HOLE DIA. 31 1/2" & OVER		±.005	AS SUPPLIED		
HOLE DIA. 31 3/4" & OVER		±.005	AS SUPPLIED		
HOLE DIA. 32" & OVER		±.005	AS SUPPLIED		
HOLE DIA. 32 1/4" & OVER		±.005	AS SUPPLIED		
HOLE DIA. 32 1/2" & OVER		±.005	AS SUPPLIED		
HOLE DIA. 32 3/4" & OVER		±.005	AS SUPPLIED		
HOLE DIA. 33" & OVER		±.005	AS SUPPLIED		
HOLE DIA. 33 1/4" & OVER		±.005	AS SUPPLIED		
HOLE DIA. 33 1/2" & OVER		±.005	AS SUPPLIED		
HOLE DIA. 33 3/4" & OVER		±.005	AS SUPPLIED		
HOLE DIA. 34" & OVER		±.005	AS SUPPLIED		
HOLE DIA. 34 1/4" & OVER		±.005	AS SUPPLIED		
HOLE DIA. 34 1/2" & OVER		±.005	AS SUPPLIED		
HOLE DIA. 34 3/4" & OVER		±.005	AS SUPPLIED		
HOLE DIA. 35" & OVER		±.005	AS SUPPLIED		
HOLE DIA. 35 1/4" & OVER		±.005	AS SUPPLIED		
HOLE DIA. 35 1/2" & OVER		±.005	AS SUPPLIED		
HOLE DIA. 35 3/4" & OVER		±.005	AS SUPPLIED		
HOLE DIA. 36" & OVER		±.005	AS SUPPLIED		
HOLE DIA. 36 1/4" & OVER		±.005	AS SUPPLIED		
HOLE DIA. 36 1/2" & OVER		±.005	AS SUPPLIED		
HOLE DIA. 36 3/4" & OVER		±.005	AS SUPPLIED		
HOLE DIA. 37" & OVER		±.005	AS SUPPLIED		
HOLE DIA. 37 1/4" & OVER		±.005	AS SUPPLIED		
HOLE DIA. 37 1/2" & OVER		±.005	AS SUPPLIED		
HOLE DIA. 37 3/4" & OVER		±.005	AS SUPPLIED		
HOLE DIA. 38" & OVER		±.005	AS SUPPLIED		
HOLE DIA. 38 1/4" & OVER		±.005	AS SUPPLIED		
HOLE DIA. 38 1/2" & OVER		±.005	AS SUPPLIED		
HOLE DIA. 38 3/4" & OVER		±.005	AS SUPPLIED		
HOLE DIA. 39" & OVER		±.005	AS SUPPLIED		
HOLE DIA. 39 1/4" & OVER		±.005	AS SUPPLIED		
HOLE DIA. 39 1/2" & OVER		±.005	AS SUPPLIED		
HOLE DIA. 39 3/4" & OVER		±.005	AS SUPPLIED		
HOLE DIA. 40" & OVER		±.005	AS SUPPLIED		
HOLE DIA. 40 1/4" & OVER		±.005	AS SUPPLIED		
HOLE DIA. 40 1/2" & OVER		±.005	AS SUPPLIED		
HOLE DIA. 40 3/4" & OVER		±.005	AS SUPPLIED		
HOLE DIA. 41" & OVER		±.005	AS SUPPLIED		
HOLE DIA. 41 1/4" & OVER		±.005	AS SUPPLIED		
HOLE DIA. 41 1/2" & OVER		±.005	AS SUPPLIED		
HOLE DIA. 41 3/4" & OVER		±.005	AS SUPPLIED		
HOLE DIA. 42" & OVER		±.005	AS SUPPLIED		
HOLE DIA. 42 1/4" & OVER		±.005	AS SUPPLIED		
HOLE DIA. 42 1/2" & OVER		±.005	AS SUPPLIED		
HOLE DIA. 42 3/4" & OVER		±.005	AS SUPPLIED		
HOLE DIA. 43" & OVER		±.005	AS SUPPLIED		
HOLE DIA. 43 1/4" & OVER		±.005	AS SUPPLIED		
HOLE DIA. 43 1/2" & OVER		±.005	AS SUPPLIED		
HOLE DIA. 43 3/4" & OVER		±.005	AS SUPPLIED		
HOLE DIA. 44" & OVER		±.005	AS SUPPLIED		
HOLE DIA. 44 1/4" & OVER		±.005	AS SUPPLIED		
HOLE DIA. 44 1/2" & OVER		±.005	AS SUPPLIED		
HOLE DIA. 44 3/4" & OVER		±.005	AS SUPPLIED		
HOLE DIA. 45" & OVER		±.005	AS SUPPLIED		
HOLE DIA. 45 1/4" & OVER		±.005	AS SUPPLIED		
HOLE DIA. 45 1/2" & OVER		±.005	AS SUPPLIED		
HOLE DIA. 45 3/4" & OVER		±.005	AS SUPPLIED		
HOLE DIA. 46" & OVER		±.005	AS SUPPLIED		
HOLE DIA. 46 1/4" & OVER		±.005	AS SUPPLIED		
HOLE DIA. 46 1/2" & OVER		±.005	AS SUPPLIED		
HOLE DIA. 46 3/4" & OVER		±.005	AS SUPPLIED		
HOLE DIA. 47" & OVER		±.005	AS SUPPLIED		
HOLE DIA. 47 1/4" & OVER		±.005	AS SUPPLIED		
HOLE DIA. 47 1/2" & OVER		±.005	AS SUPPLIED		
HOLE DIA. 47 3/4" & OVER		±.005	AS SUPPLIED		
HOLE DIA. 48" & OVER		±.005	AS SUPPLIED		
HOLE DIA. 48 1/4" & OVER		±.005	AS SUPPLIED		
HOLE DIA. 48 1/2" & OVER		±.005	AS SUPPLIED		
HOLE DIA. 48 3/4" & OVER		±.005	AS SUPPLIED		
HOLE DIA. 49" & OVER		±.005	AS SUPPLIED		
HOLE DIA. 49 1/4" & OVER		±.005	AS SUPPLIED		
HOLE DIA. 49 1/2" & OVER		±.005	AS SUPPLIED		
HOLE DIA. 49 3/4" & OVER		±.005	AS SUPPLIED		
HOLE DIA. 50" & OVER		±.005	AS SUPPLIED		
HOLE DIA. 50 1/4" & OVER		±.005	AS SUPPLIED		
HOLE DIA. 50 1/2" & OVER		±.005	AS SUPPLIED		
HOLE DIA. 50 3/4" & OVER		±.005	AS SUPPLIED		
HOLE DIA. 51" & OVER		±.005	AS SUPPLIED		
HOLE DIA. 51 1/4" & OVER		±.005	AS SUPPLIED		
HOLE DIA. 51 1/2" & OVER		±.005	AS SUPPLIED		
HOLE DIA. 51 3/4" & OVER		±.005	AS SUPPLIED		
HOLE DIA. 52" & OVER		±.005	AS SUPPLIED		
HOLE DIA. 52 1/4" & OVER		±.005	AS SUPPLIED		
HOLE DIA. 52 1/2" & OVER		±.005	AS SUPPLIED		
HOLE DIA. 52 3/4" & OVER		±.005	AS SUPPLIED		
HOLE DIA. 53" & OVER		±.005	AS SUPPLIED		
HOLE DIA. 53 1/4" & OVER		±.005	AS SUPPLIED		
HOLE DIA. 53 1/2" & OVER		±.005	AS SUPPLIED		
HOLE DIA. 53 3/4" & OVER		±.005	AS SUPPLIED		
HOLE DIA. 54" & OVER		±.005	AS SUPPLIED		
HOLE DIA. 54 1/4" & OVER		±.005	AS SUPPLIED		
HOLE DIA. 54 1/2" & OVER		±.005	AS SUPPLIED		
HOLE DIA. 54 3/4" & OVER		±.005	AS SUPPLIED		
HOLE DIA. 55" & OVER		±.005	AS SUPPLIED		
HOLE DIA. 55 1/4" & OVER		±.005	AS SUPPLIED		
HOLE DIA. 55 1/2" & OVER		±.005	AS SUPPLIED		
HOLE DIA. 55 3/4" & OVER		±.005	AS SUPPLIED		
HOLE DIA. 56" & OVER		±.005	AS SUPPLIED		
HOLE DIA. 56 1/4" & OVER		±.005	AS SUPPLIED		
HOLE DIA. 56 1/2" & OVER		±.005	AS SUPPLIED		
HOLE DIA. 56 3/4" & OVER		±.005	AS SUPPLIED		
HOLE DIA. 57" & OVER		±.005	AS SUPPLIED		







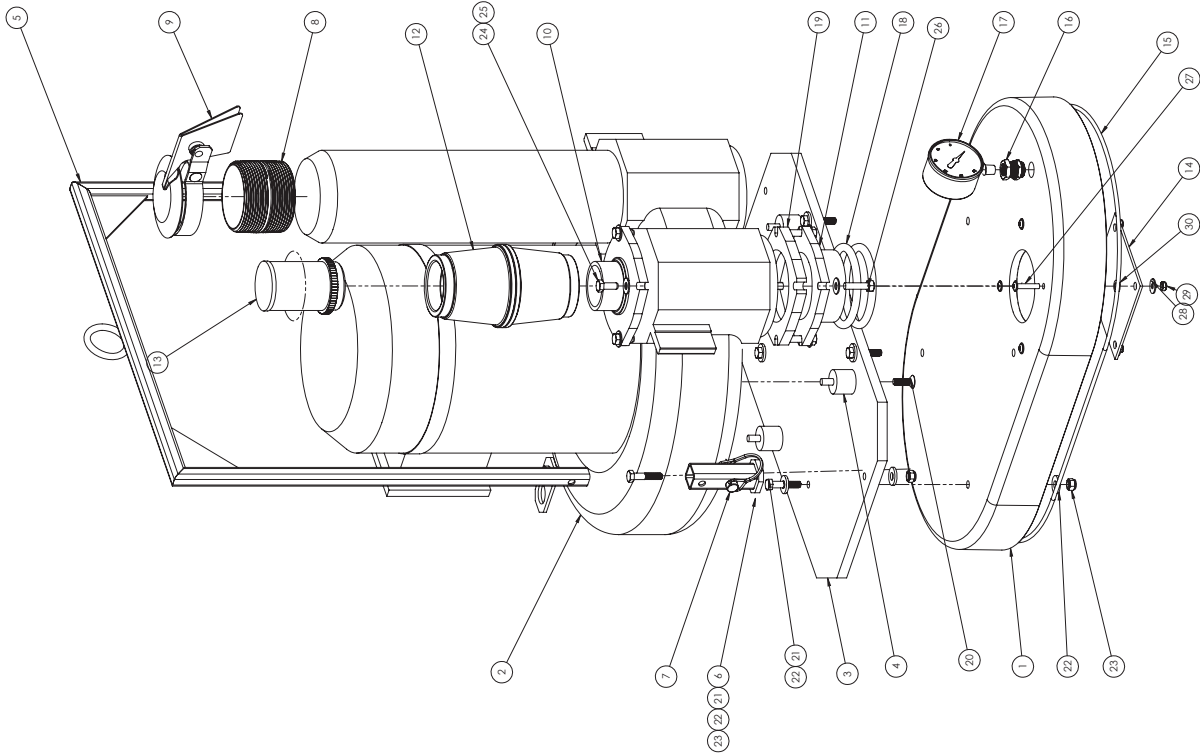








REVISIONS			
ZONE	REV.	DESCRIPTION	DATE
	A	ECO 1371 CHANGES GASKET	8/9/2027
			DUE



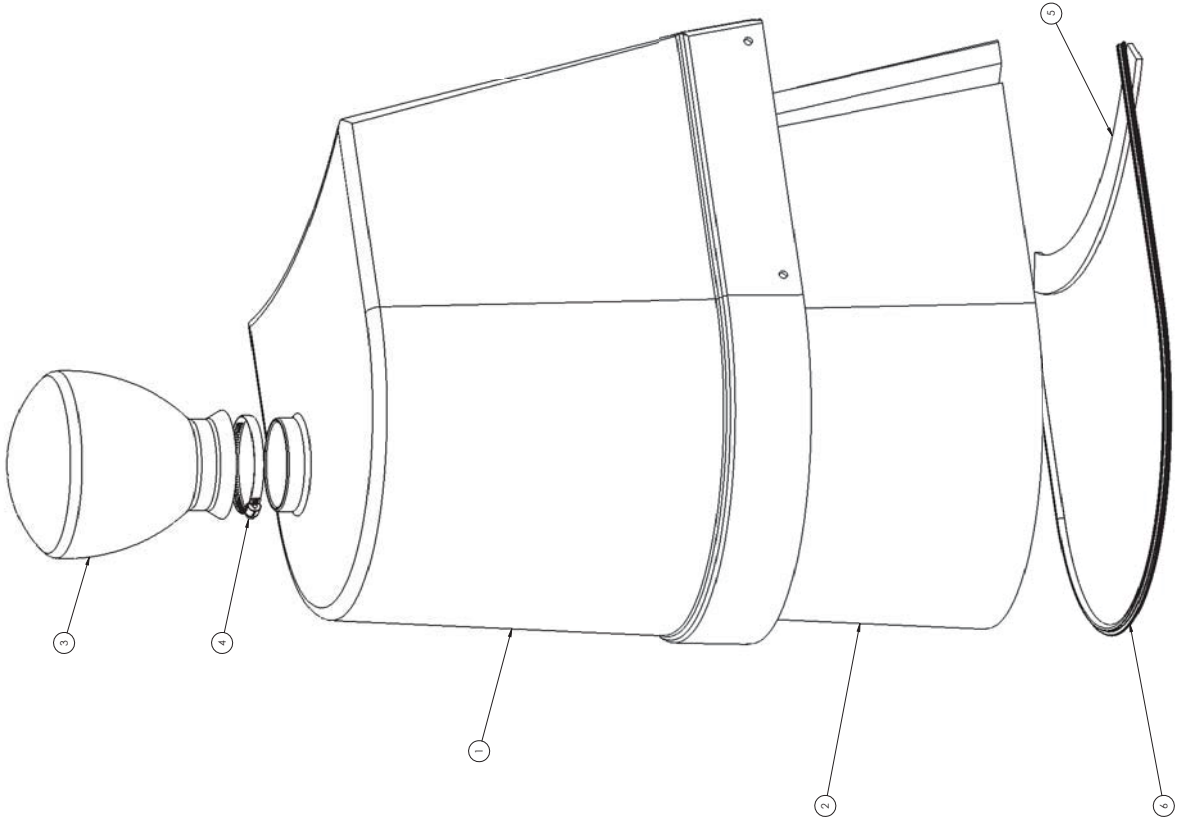
ITEM NO.	PART NO.	DESCRIPTION	QTY.
1	90228003	LID/DECK, DI, 47X48, REGEN VERT MOUNT	1
2	45134	REGEN KOB-M8, 10HP	1
3	45134P01	REGEN VERT MOUNT PLATE, ALU	1
4	91281	VIBRATION MOUNT M8	3
5	60210F	REMOVABLE LIFTING BAR	1
6	60210C	DECK MOUNT WELDMENT	2
7	25029	RETAINER PIN	2
8	349463	NIPPLE, 3 X CLOSE STEEL	1
9	A23-104	BAN CAP, 3"	1
10	45115-21	V7-8 FLANGED 2"WNPT CONNECTOR	1
11	45115-4	PK8 FLANGED TUBE CONNECTOR 3.46"DIA	1
12	96981	RELIEF VALVE, 2", ADJUSTABLE	1
13	1002210	RELIEF VALVE, 2", SCREEN ADAPTER	1
14	2177701	PROTECTION SCREEN 5 X 5"	1
15	31376002	GASKET, NEOPRENE, 188", 5.4FT LG	1
16	20062801	BULKHEAD 1/4" NPT	1
17	2006253	GAGE VACUUM, 0-160"WC 2.5" DIA SS	1
18	2509803	GASKET, ROUND, 3/8", CUT AT 11.5"	2
19	45115-1	FLANGE SPACER, 17.8MM	1
20	2504970	SCREW FH M8 X 25, BLK OX	3
21	31208	HEX BOLT, PARTIAL THREAD 5/16-18, 1 1/2"	6
22	31205	FLAT WASHER 3/16	10
23	31202	5/16-18 LOCK NUT	6
24	25038	BOLT, HEX M8 X 20	4
25	34852	WASHER FLAT/THIN M8 ZINC	8
26	25031	BOLT, HEX M8 X 30	4
27	21464	SCREW M6 X 30, SOC HD, FLANGED	4
28	31487	WASHER FINGER M6	4
29	31474	WASHER FINGER M6	4
30	200482	NITON WASHER SPACER	1

UNLESS OTHERWISE SPECIFIED:	UNITS: INCHES	DATE: 10/27/16	SA: William St.
DRAWN BY: [Signature]	DWG NO: 451348V	TITLE: DS1 MOTORDECK, VP880 7.5HP, 3-PHASE, VERT MOUNT	REV: A
CHECKED BY: [Signature]	SCALE: 1:4, W/EGRE:	SIZE: DWG. NO. 000 E 0360 US	SHEET 1 OF 1
APPROVED BY: [Signature]			





REVISIONS			
ZONE	REV.	DESCRIPTION	DATE
	D	ECO 799	3/6/2011
	E	ECO 744	3/22/2013
	F	ECO 1M2-BLANKETED HARDWARE, UPDATED PRINT	5/18/2017



ITEM NO.	PART NO.	DESCRIPTION	QTY.
1	34976	SILENCER HOOD, BLACK, D1	1
2	326202	FOAM, SILENCER HOOD, .75 X 8 X 32.5	1
3	30058	AIR DIFFUSER BAG, D31, LD	1
4	4018	HOSE CLAMP, 2.51 X 2.81, SS	1
5	31077	GASKET, 1.758 X 1.875, 316L STAINLESS STEEL, FOR VAC DIFFUSER	1 FT
6		GASKET, NIBBLE SPACER, FOR VAC DIFFUSER	3.35 FT

DATE	5/18/17	TITLE	ECO 1M2-BLANKETED HARDWARE, UPDATED PRINT
DESIGNED BY	ECO 1M2-BLANKETED HARDWARE, UPDATED PRINT	DATE	5/18/17
CHECKED BY	ECO 1M2-BLANKETED HARDWARE, UPDATED PRINT	DATE	5/18/17
APPROVED BY	ECO 1M2-BLANKETED HARDWARE, UPDATED PRINT	DATE	5/18/17
SCALE	1:2	WEGE	ECO 1M2-BLANKETED HARDWARE, UPDATED PRINT

FOR INFORMATION ONLY: THIS DRAWING IS NOT TO BE USED FOR CONSTRUCTION OF THE PROJECT. ANY CHANGES TO THE PROJECT SHALL BE MADE BY THE PROJECT MANAGER. ANY CHANGES TO THE PROJECT SHALL BE MADE BY THE PROJECT MANAGER.

ECO 1M2-BLANKETED HARDWARE, UPDATED PRINT

ECO 1M2-BLANKETED HARDWARE, UPDATED PRINT

ECO 1M2-BLANKETED HARDWARE, UPDATED PRINT

ECO 1M2-BLANKETED HARDWARE, UPDATED PRINT

ECO 1M2-BLANKETED HARDWARE, UPDATED PRINT

ECO 1M2-BLANKETED HARDWARE, UPDATED PRINT

ECO 1M2-BLANKETED HARDWARE, UPDATED PRINT

ECO 1M2-BLANKETED HARDWARE, UPDATED PRINT

ECO 1M2-BLANKETED HARDWARE, UPDATED PRINT

ECO 1M2-BLANKETED HARDWARE, UPDATED PRINT

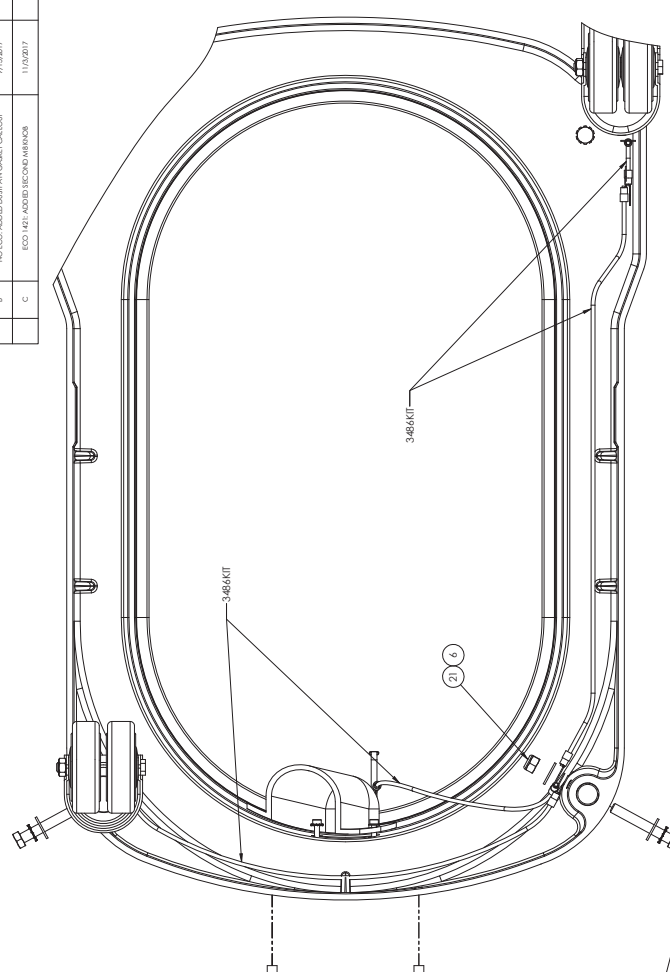
ECO 1M2-BLANKETED HARDWARE, UPDATED PRINT

ECO 1M2-BLANKETED HARDWARE, UPDATED PRINT

ECO 1M2-BLANKETED HARDWARE, UPDATED PRINT

ECO 1M2-BLANKETED HARDWARE, UPDATED PRINT





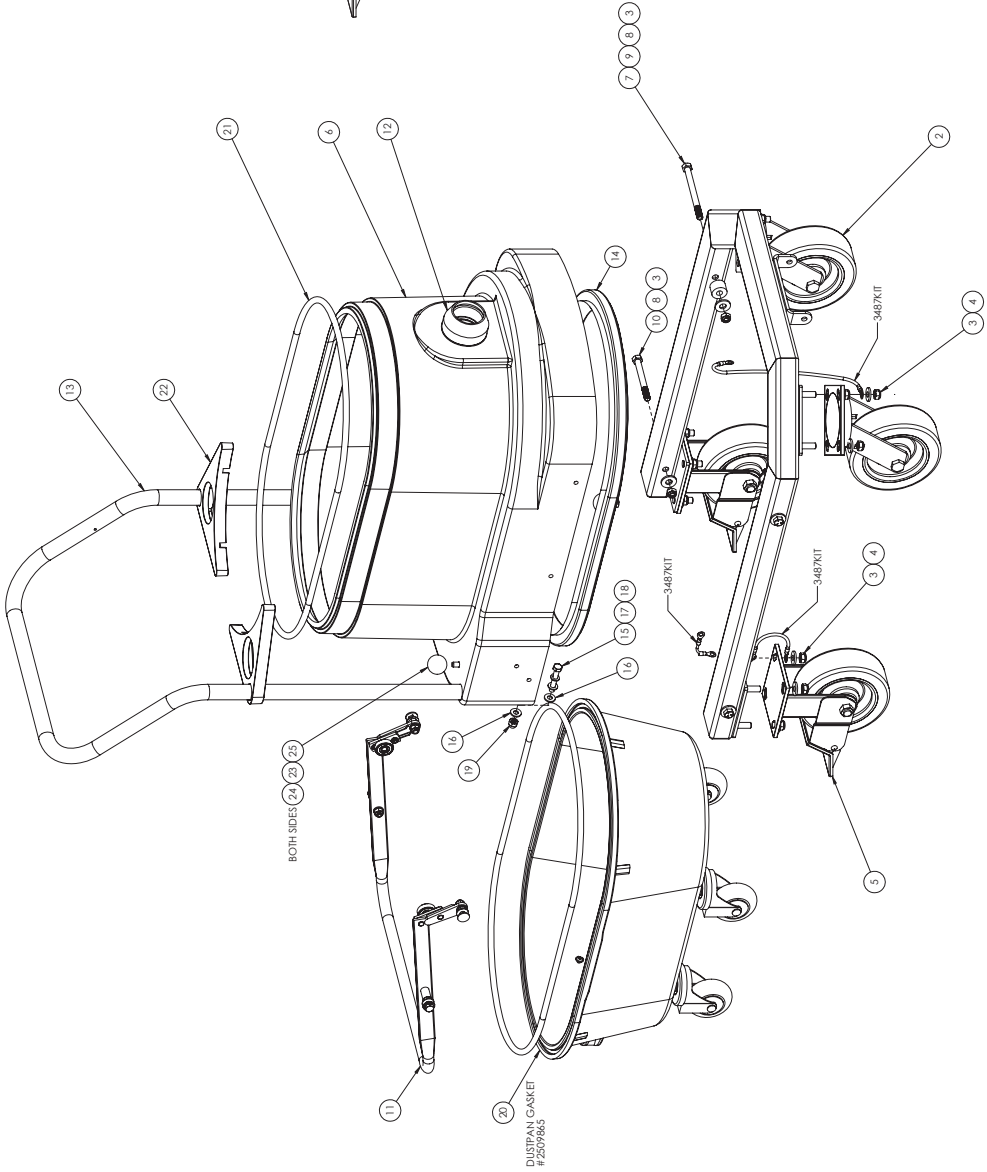
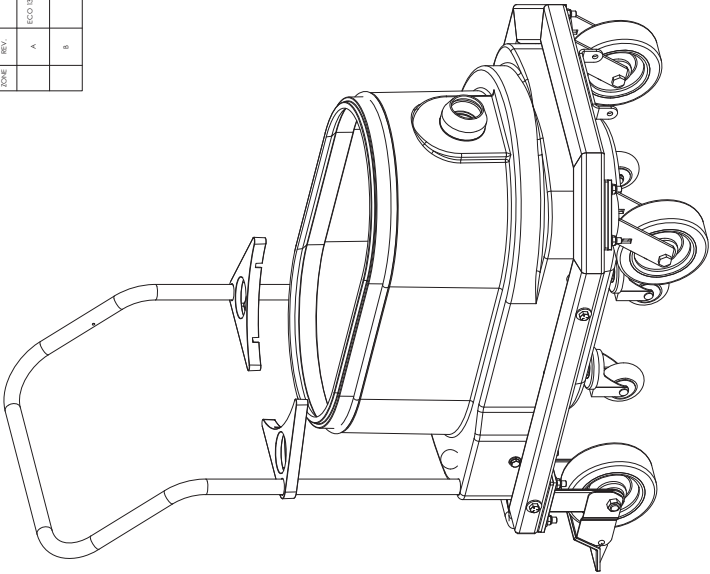
ITEM NO.	PART NO.	DESCRIPTION	QTY.
1	3283A001	LOWER HOUSING, D1, 50MM, BLK	1
2	250360	PUSH HANDLE, D1, 50MM	1
3	32039R	HANDLE SUPPORT PLASTIC	2
4	20070	D1 LOWER HOUSING GASKET	1
5	251180	CASTER, FIXED, 75MM, ANTI-STATIC	4
6	344862	WASHER FLAT/THIN/HD ZINC	2
7	250337	WASHER EXT STAR HD ZINC	4
8	271210	PLUG, 8MM, BLK	4
9	250368	BOLT HEX M8 X 20	2
10	250369	WASHER BOLT HEX NYLON	6
11	329270	WASHER BOLT HEX NYLON	2
12	344810	HEX BOLT M8 X 30	2
13	200950	WASHER SPIR LOCK M8	2
14	25061	M8 FLAT WASHER	2
15	25060	KNOB, BLACK, 8MM	2
16	20010A	D1 DUSTPAN/LEVER ASM	1
17	2509862	GASKET, 10MM, 62N	1
18	25117	CASTER, DUAL, SWIVEL, 25MM, EX	2
19	32837	D1 DUSTPAN W/ GASKET	1
20	34811	BOLT HEX M8 X 35	2
21	30029	NUT LOCK M8	2
22	20066A	50MM ALU INLET ASM	1
23	3446KIT	WIRE KIT D1 EX BASE	1

54 Sullivan St. Haverhill, MA 01830 Tel: 978/335-1100 Fax: 978/335-1101		DATE: 01/04/00 TIME: 09:00	
TITLE: <b>DI BASE ASM, BLK 50WVA          GROUNDED, ALN DEFLECTOR</b>		SIZE (DWG. NO.): <b>32836A50</b>	
REV: <b>0001</b> 0001 C045 US		SCALE: 1:125000 SHEET 1 OF 1	
COMMENTS: <b>BREAK SHARP EDGES</b>			
MATERIAL: <b>HA4</b>			
THE INFORMATION CONTAINED IN THIS DRAWING IS THE PROPERTY OF THE COMPANY AND IS NOT TO BE REPRODUCED OR TRANSMITTED IN ANY FORM OR BY ANY MEANS, ELECTRONIC OR MECHANICAL, INCLUDING PHOTOCOPYING, RECORDING, OR BY ANY INFORMATION STORAGE AND RETRIEVAL SYSTEM, WITHOUT THE WRITTEN PERMISSION OF THE COMPANY.			

DUSTPAN GASKET #2509865



REVISIONS			
ZONE	REV.	DESCRIPTION	DATE
	A	ECO BBS REACTIVE BASE/REINFORCED GROUND WHEEL REPLACED WITH RUBBER	8/25/2017
	B	ECO 1401 AZDIB SECOND HARBOR	11/6/2017



ITEM NO.	PART NO.	DESCRIPTION	QTY.
1	302120A	CASTER FRAME HD	1
2	302130C	CASTER, 4IN, SWIVEL, NO BRK, EX	2
3	37506	LOCK NUT 3/8-16	20
4	31205	FLAT WASHER 5/16	16
5	302130C	CASTER, 6" RIGID W/ BRAKE	2
6	32834003	LOWER HOUSING BASE, DI, BLK	1
7	200515	HEX BOLT 3/8-16 X 4 1/2"	2
8	37507	3/8" FLAT WASHER	8
9	2006401	SPACER	2
10	200512	HEX BOLT 3/8-16 X 3 1/2"	2
11	20010A	DI DUSTPAN LEVER ASM	1
12	20006A	50MM ALU INLET ASM	1
13	25080	PUSH HANDLE, DI, W2	1
14	20070	DI LOWER HOUSING GASKET	1
15	34810	HEX BOLT M8 X 50	2
16	200190	WASHER M8 BLK NYLON	5
17	20050	WASHER SPLIT LOCK M8	2
18	25061	M8 FLAT WASHER	2
19	32927	ACORN NUT M8	2
20	32837002	DI DUSTPAN ASM, EX CASTERS	1
21	2509602	GASKET, 10MM, 62IN	1
22	30039R	HANDLE SUPPORT, PLASTIC	2
23	20038	BOLT HD M8 X 20	2
24	20039	WASHER EXT, PLASTIC, ZINC	2
25	20040	WASHER EXT, PLASTIC, ZINC	2
26	3487XIT	WIRE 1/8" ID CASTER FRAME	1

DATE	3/17/16	SAVING ST.	HOYLE, MS. 01040
DESIGNED BY	JP	TITLE	
CHECKED BY			
APPROVED BY			
DATE	3/17/16		
COMMENTS			
30212050			
SIZE	DWG. NO.	REV	
30212050	D	000 E 0355 US	B
SCALE: 1/8" = 1"			

IMPORTANT AND COMMENTS:  
 THE INFORMATION CONTAINED IN THIS DRAWING IS THE PROPERTY OF THE COMPANY AND IS NOT TO BE REPRODUCED OR TRANSMITTED IN ANY FORM OR BY ANY MEANS, ELECTRONIC OR MECHANICAL, INCLUDING PHOTOCOPYING, RECORDING, OR BY ANY INFORMATION STORAGE AND RETRIEVAL SYSTEM.

30212050

30212050

30212050

30212050

30212050

30212050

30212050

30212050

30212050

30212050

30212050

30212050

30212050

30212050

30212050

30212050

30212050

30212050

30212050

30212050

30212050

30212050

30212050

30212050

30212050

30212050

30212050





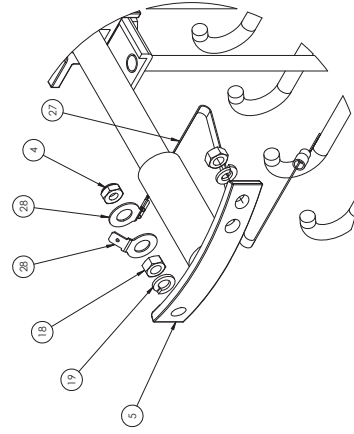
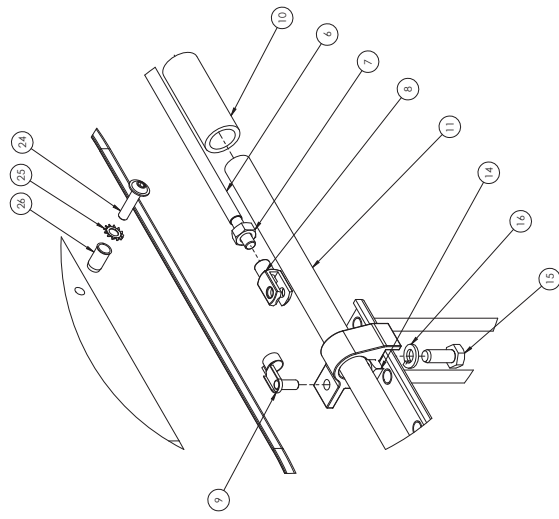












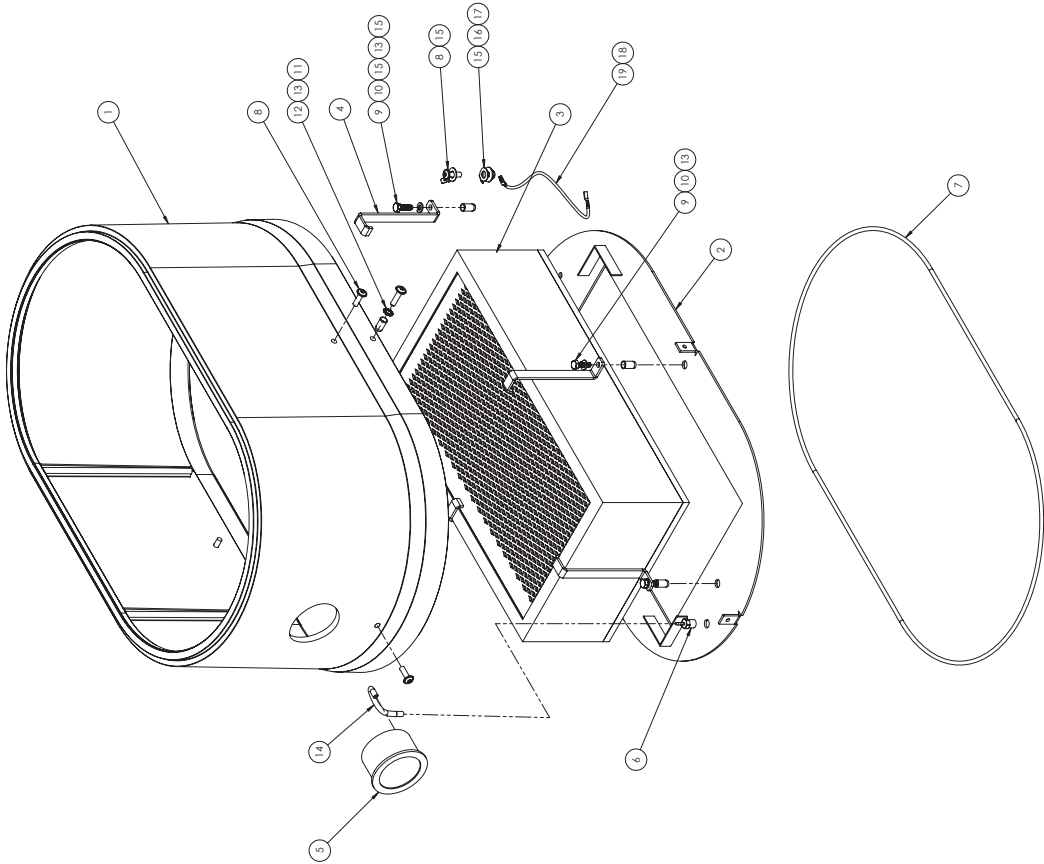
ITEM NO.	PART NO.	DESCRIPTION	QTY.
1	30395	FILTER BAR SUPPORT	1
2	328-34033	HOUSING SPACER, D1, SWALL, BIC, NO HBAR BKT HOLES	1
3	34817	SCREW 1/5 SOC HD M6 X 20	1
4	34816	WASHER 1/5 SOC HD M6 X 20	2
5	34801	SHAKER BODY HOUSING SUPPORT	2
6	22565	SHAKER BAR W/ SWIVEL HANDLE	1
7	20044	HEX NUT M8 ZINC	1
8	25047	CLEVIS, 4X12, M8 BKT	1
9	34879	SPRING CLIP FOR CLEVIS YOKE, 6MM X 12MM	1
10	34852525	CLEAR HOSE, 3/4"ID, 2 1/2" LONG	2
11	34804	MATERIAL SHAKER BAR	1
12	34802	FILTER SIDE GUIDE, PLASTIC	2
13	22056	FILTER SUPPORT WELDMENT 1.2M	1
14	20045	NUT, SQUARE, M8	2
15	22038	BOLT HEX M8 X 20	2
16	20050	WASHER FLAT LOCK, 2	4
17	34815	SCREW SOC FH M6 X 30	4
18	20040	NUT HEX M6	4
19	20039	WASHER LOCK M6	4
20	34871	PLASTIC PLUG, 4.5/13	4
21	20091F	FILTER INSERT	8
22	20091	1.2M FILTER	1
23	3137766	GASKET, NITRILE SPONGE	1
24	3481701	SCREW SOC BH, FLANGED, M6-25	1
25	25000	WASHER EXT STAK, 25IN	2
26	34817/A	M6 BLIND FEM	2
27	34868	GROUND, NITRILE FILTER TO DEFLECTOR	2

20	QTY 70	STATE OF CALIFORNIA	CONTRACT NO.	2
				SAWYER, S. M. 01/04
		TITLE:		HYDRO. MCM. 01/04
		DATE OF ORDER:		01/04/04
		QUANTITY:		70
		ORDER NO.:		01/04/04
		ORDER DATE:		01/04/04
		ORDER TIME:		01/04/04
		ORDER LOCATION:		01/04/04
		ORDER DESCRIPTION:		01/04/04
		ORDER COMMENTS:		01/04/04
		ORDER STATUS:		01/04/04
		ORDER TYPE:		01/04/04
		ORDER CATEGORY:		01/04/04
		ORDER SUBCATEGORY:		01/04/04
		ORDER ITEM:		01/04/04
		ORDER PART:		01/04/04
		ORDER MATERIAL:		01/04/04
		ORDER FINISH:		01/04/04
		ORDER COLOR:		01/04/04
		ORDER WEIGHT:		01/04/04
		ORDER LENGTH:		01/04/04
		ORDER WIDTH:		01/04/04
		ORDER HEIGHT:		01/04/04
		ORDER VOLUME:		01/04/04
		ORDER SURFACE AREA:		01/04/04
		ORDER PERIMETER:		01/04/04
		ORDER DIAMETER:		01/04/04
		ORDER RADIUS:		01/04/04
		ORDER AREA:		01/04/04
		ORDER CIRCUMFERENCE:		01/04/04
		ORDER VOLUME:		01/04/04
		ORDER SURFACE AREA:		01/04/04
		ORDER PERIMETER:		01/04/04
		ORDER DIAMETER:		01/04/04
		ORDER RADIUS:		01/04/04
		ORDER AREA:		01/04/04
		ORDER CIRCUMFERENCE:		01/04/04
		ORDER VOLUME:		01/04/04
		ORDER SURFACE AREA:		01/04/04
		ORDER PERIMETER:		01/04/04
		ORDER DIAMETER:		01/04/04
		ORDER RADIUS:		01/04/04
		ORDER AREA:		01/04/04
		ORDER CIRCUMFERENCE:		01/04/04
		ORDER VOLUME:		01/04/04
		ORDER SURFACE AREA:		01/04/04
		ORDER PERIMETER:		01/04/04
		ORDER DIAMETER:		01/04/04
		ORDER RADIUS:		01/04/04
		ORDER AREA:		01/04/04
		ORDER CIRCUMFERENCE:		01/04/04
		ORDER VOLUME:		01/04/04
		ORDER SURFACE AREA:		01/04/04
		ORDER PERIMETER:		01/04/04
		ORDER DIAMETER:		01/04/04
		ORDER RADIUS:		01/04/04
		ORDER AREA:		01/04/04
		ORDER CIRCUMFERENCE:		01/04/04
		ORDER VOLUME:		01/04/04
		ORDER SURFACE AREA:		01/04/04
		ORDER PERIMETER:		01/04/04
		ORDER DIAMETER:		01/04/04
		ORDER RADIUS:		01/04/04
		ORDER AREA:		01/04/04
		ORDER CIRCUMFERENCE:		01/04/04
		ORDER VOLUME:		01/04/04
		ORDER SURFACE AREA:		01/04/04
		ORDER PERIMETER:		01/04/04
		ORDER DIAMETER:		01/04/04
		ORDER RADIUS:		01/04/04
		ORDER AREA:		01/04/04
		ORDER CIRCUMFERENCE:		01/04/04
		ORDER VOLUME:		01/04/04
		ORDER SURFACE AREA:		01/04/04
		ORDER PERIMETER:		01/04/04
		ORDER DIAMETER:		01/04/04
		ORDER RADIUS:		01/04/04
		ORDER AREA:		01/04/04
		ORDER CIRCUMFERENCE:		01/04/04
		ORDER VOLUME:		01/04/04
		ORDER SURFACE AREA:		01/04/04
		ORDER PERIMETER:		01/04/04
		ORDER DIAMETER:		01/04/04
		ORDER RADIUS:		01/04/04
		ORDER AREA:		01/04/04
		ORDER CIRCUMFERENCE:		01/04/04
		ORDER VOLUME:		01/04/04
		ORDER SURFACE AREA:		01/04/04
		ORDER PERIMETER:		01/04/04
		ORDER DIAMETER:		01/04/04
		ORDER RADIUS:		01/04/04
		ORDER AREA:		01/04/04
		ORDER CIRCUMFERENCE:		01/04/04
		ORDER VOLUME:		01/04/04
		ORDER SURFACE AREA:		01/04/04
		ORDER PERIMETER:		01/04/04
		ORDER DIAMETER:		01/04/04
		ORDER RADIUS:		01/04/04
		ORDER AREA:		01/04/04
		ORDER CIRCUMFERENCE:		01/04/04
		ORDER VOLUME:		01/04/04
		ORDER SURFACE AREA:		01/04/04
		ORDER PERIMETER:		01/04/04
		ORDER DIAMETER:		01/04/04
		ORDER RADIUS:		01/04/04
		ORDER AREA:		01/04/04
		ORDER CIRCUMFERENCE:		01/04/04
		ORDER VOLUME:		01/04/04
		ORDER SURFACE AREA:		01/04/04
		ORDER PERIMETER:		01/04/04
		ORDER DIAMETER:		01/04/04
		ORDER RADIUS:		01/04/04
		ORDER AREA:		01/04/04
		ORDER CIRCUMFERENCE:		01/04/04
		ORDER VOLUME:		01/04/04
		ORDER SURFACE AREA:		01/04/04
		ORDER PERIMETER:		01/04/04
		ORDER DIAMETER:		01/04/04
		ORDER RADIUS:		01/04/04
		ORDER AREA:		01/04/04
		ORDER CIRCUMFERENCE:		01/04/04
		ORDER VOLUME:		01/04/04
		ORDER SURFACE AREA:		01/04/04
		ORDER PERIMETER:		01/04/04
		ORDER DIAMETER:		01/04/04
		ORDER RADIUS:		01/04/04
		ORDER AREA:		01/04/04
		ORDER CIRCUMFERENCE:		01/04/04
		ORDER VOLUME:		01/04/04
		ORDER SURFACE AREA:		01/04/04
		ORDER PERIMETER:		01/04/04
		ORDER DIAMETER:		01/04/04
		ORDER RADIUS:		01/04/04
		ORDER AREA:		01/04/04
		ORDER CIRCUMFERENCE:		01/04/04
		ORDER VOLUME:		01/04/04
		ORDER SURFACE AREA:		01/04/04
		ORDER PERIMETER:		01/04/04
		ORDER DIAMETER:		01/04/04
		ORDER RADIUS:		01/04/04
		ORDER AREA:		01/04/04
		ORDER CIRCUMFERENCE:		01/04/04
		ORDER VOLUME:		01/04/04
		ORDER SURFACE AREA:		01/04/04
		ORDER PERIMETER:		01/04/04
		ORDER DIAMETER:		01/04/04
		ORDER RADIUS:		01/04/04
		ORDER AREA:		01/04/04
		ORDER CIRCUMFERENCE:		01/04/04
		ORDER VOLUME:		01/04/04
		ORDER SURFACE AREA:		01/04/04
		ORDER PERIMETER:		01/04/04
		ORDER DIAMETER:		01/04/04
		ORDER RADIUS:		01/04/04
		ORDER AREA:		01/04/04
		ORDER CIRCUMFERENCE:		01/04/04
		ORDER VOLUME:		01/04/04
		ORDER SURFACE AREA:		01/04/04
		ORDER PERIMETER:		01/04/04
		ORDER DIAMETER:		01/04/04
		ORDER RADIUS:		01/04/04
		ORDER AREA:		01/04/04
		ORDER CIRCUMFERENCE:		01/04/04
		ORDER VOLUME:		01/04/04
		ORDER SURFACE AREA:		01/04/04
		ORDER PERIMETER:		01/04/04
		ORDER DIAMETER:		01/04/04
		ORDER RADIUS:		01/04/04
		ORDER AREA:		01/04/04
		ORDER CIRCUMFERENCE:		01/04/04
		ORDER VOLUME:		01/04/04
		ORDER SURFACE AREA:		01/04/04
		ORDER PERIMETER:		01/04/04
		ORDER DIAMETER:		01/04/04
		ORDER RADIUS:		01/04/04
		ORDER AREA:		01/04/04
		ORDER CIRCUMFERENCE:		01/04/04
		ORDER VOLUME:		01/04/04
		ORDER SURFACE AREA:		01/04/04
		ORDER PERIMETER:		01/04/04
		ORDER DIAMETER:		01/04/04
		ORDER RADIUS:		01/04/04
		ORDER AREA:		01/04/04
		ORDER CIRCUMFERENCE:		01/04/04
		ORDER VOLUME:		01/04/04
		ORDER SURFACE AREA:		01/04/04
		ORDER PERIMETER:		01/04/04
		ORDER DIAMETER:		01/04/04
		ORDER RADIUS:		01/04/04
		ORDER AREA:		01/04/04
		ORDER CIRCUMFERENCE:		01/04/04
		ORDER VOLUME:		01/04/04
		ORDER SURFACE AREA:		01/04/04
		ORDER PERIMETER:		01/04/04
		ORDER DIAMETER:		01/04/04
		ORDER RADIUS:		01/04/04
		ORDER AREA:		01/04/04
		ORDER CIRCUMFERENCE:		01/04/04
		ORDER VOLUME:		01/04/04
		ORDER SURFACE AREA:		01/04/04
		ORDER PERIMETER:		01/04/04
		ORDER DIAMETER:		01/04/04
		ORDER RADIUS:		01/04/04
		ORDER AREA:		01/04/04
		ORDER CIRCUMFERENCE:		01/04/04
		ORDER VOLUME:		01/04/04
		ORDER SURFACE AREA:		01/04/04
		ORDER PERIMETER:		01/04/04
		ORDER DIAMETER:		01/04/04
		ORDER RADIUS:		01/04/04
		ORDER AREA:		01/04/04
		ORDER CIRCUMFERENCE:		01/04/04
		ORDER VOLUME:		01/04/04
		ORDER SURFACE AREA:		01/04/04
		ORDER PERIMETER:		01/04/04
		ORDER DIAMETER:		01/04/04
		ORDER RADIUS:		01/04/04
		ORDER AREA:		01/04/04
		ORDER CIRCUMFERENCE:		01/04/04
		ORDER VOLUME:		01/04/04
		ORDER SURFACE AREA:		01/04/04
		ORDER PERIMETER:		01/04/04
		ORDER DIAMETER:		01/04/04
		ORDER RADIUS:		01/04/04
		ORDER AREA:		01/04/04
		ORDER CIRCUMFERENCE:		01/04/04
		ORDER VOLUME:		01/04/04
		ORDER SURFACE AREA:		01/04/04
		ORDER PERIMETER:		01/04/04
		ORDER DIAMETER:		01/04/04
		ORDER RADIUS:		01/04/04
		ORDER AREA:		01/04/04
		ORDER CIRCUMFERENCE:		01/04/04
		ORDER VOLUME:		01/04/04
		ORDER SURFACE AREA:		01/04/04
		ORDER PERIMETER:		01/04/04
		ORDER DIAMETER:		01/04/04
		ORDER RADIUS:		01/04/04
		ORDER AREA:		01/04/04
		ORDER CIRCUMFERENCE:		01/04/04
		ORDER VOLUME:		01/04/04
		ORDER SURFACE AREA:		01/04/04
		ORDER PERIMETER:		01/04/04
		ORDER DIAMETER:		01/04/04
		ORDER RADIUS:		01/04/04
		ORDER AREA:		01/04/04
		ORDER CIRCUMFERENCE:		01/04/04
		ORDER VOLUME:		01/04/04
		ORDER SURFACE AREA:		01/04/04
		ORDER PERIMETER:		01/04/04
		ORDER DIAMETER:		01/04/04
		ORDER RADIUS:		01/04/04
		ORDER AREA:		01/04/04
		ORDER CIRCUMFERENCE:		01/04/04
		ORDER VOLUME:		01/04/04
		ORDER SURFACE AREA:		01/04/04
		ORDER PERIMETER:		01/04/04
		ORDER DIAMETER:		01/04/04
		ORDER RADIUS:		01/04/04
		ORDER AREA:		01/04/04
		ORDER CIRCUMFERENCE:		01/04/04
		ORDER VOLUME:		01/04/04
		ORDER SURFACE AREA:		01/04/04
		ORDER PERIMETER:		01/04/04
		ORDER DIAMETER:		01/04/04
		ORDER RADIUS:		01/04/04
		ORDER AREA:		01/04/04
		ORDER CIRCUMFERENCE:		01/04/04
		ORDER VOLUME:		01/04/04
		ORDER SURFACE AREA:		01/04/04
		ORDER PERIMETER:		01/04/04
		ORDER DIAMETER:		01/04/04
		ORDER RADIUS:		01/04/04
		ORDER AREA:		01/04/04
		ORDER CIRCUMFERENCE:		01/04/04
		ORDER VOLUME:		01/04/04
		ORDER SURFACE AREA:		01/04/04
		ORDER PERIMETER:		01/04/04
		ORDER DIAMETER:		01/04/04
		ORDER RADIUS:		01/04/04
		ORDER AREA:		01/04/04
		ORDER CIRCUMFERENCE:		01/04/04
		ORDER VOLUME:		01/04/04
		ORDER SURFACE AREA:		01/04/04
		ORDER PERIMETER:		01/04/04
		ORDER DIAMETER:		01/04/04
		ORDER RADIUS:		01/04/04
		ORDER AREA:		01/04/04
		ORDER CIRCUMFERENCE:		01/04/04
		ORDER VOLUME:		01/04/04
		ORDER SURFACE AREA:		01/04/04
		ORDER PERIMETER:		01/04/04
		ORDER DIAMETER:		01/04/04
		ORDER RADIUS:		01/04/04
		ORDER AREA:		01/04/04
		ORDER CIRCUMFERENCE:		01/04/04
		ORDER VOLUME:		01/04/04
		ORDER SURFACE AREA:		01/04/04
		ORDER PERIMETER:		01/04/04
		ORDER DIAMETER:		01/04/04
		ORDER RADIUS:		01/04/04
		ORDER AREA:		01/04/04
		ORDER CIRCUMFERENCE:		01/04/04
		ORDER VOLUME:		01/04/04
		ORDER SURFACE AREA:		01/04/04
		ORDER PERIMETER:		01/04/04
		ORDER DIAMETER:		01/04/04
		ORDER RADIUS:		01/04/04
		ORDER AREA:		01/04/04
		ORDER CIRCUMFERENCE:		01/04/04
		ORDER VOLUME:		01/04/04
		ORDER SURFACE AREA:		01/04/04
		ORDER PERIMETER:		01/04/04
		ORDER DIAMETER:		01/04/04
		ORDER RADIUS:		01/04/04
		ORDER AREA:		01/04/04
		ORDER CIRCUMFERENCE:		01/04/04
		ORDER VOLUME:		01/04/04
		ORDER SURFACE AREA:		01/04/04
		ORDER PERIMETER:		01/04/04
		ORDER DIAMETER:		01/04/04
		ORDER RADIUS:		01/04/04
		ORDER AREA:		01/04/04
		ORDER CIRCUMFERENCE:		01/04/04
		ORDER VOLUME:		01/04/04
		ORDER SURFACE AREA:		01/04/04
		ORDER PERIMETER:		01/04/04
		ORDER DIAMETER:		01/04/04
		ORDER RADIUS:		01/04/04
		ORDER AREA:		01/04/04
		ORDER CIRCUMFERENCE:		01/04/04
		ORDER VOLUME:		01/04/04
		ORDER SURFACE AREA:		01/04/04
		ORDER PERIMETER:		01/04/04
		ORDER DIAMETER:		01/04/04
		ORDER RADIUS:		01/04/04
		ORDER AREA:		01/04/04
		ORDER CIRCUMFERENCE:		01/04/04
		ORDER VOLUME:		01/04/04
		ORDER SURFACE AREA:		01/04/04
		ORDER PERIMETER:		01/04/04
		ORDER DIAMETER:		01/04/04
		ORDER RADIUS:		01/04/04
		ORDER AREA:		01/04/04
		ORDER CIRCUMFERENCE:		01/04/04
		ORDER VOLUME:		0

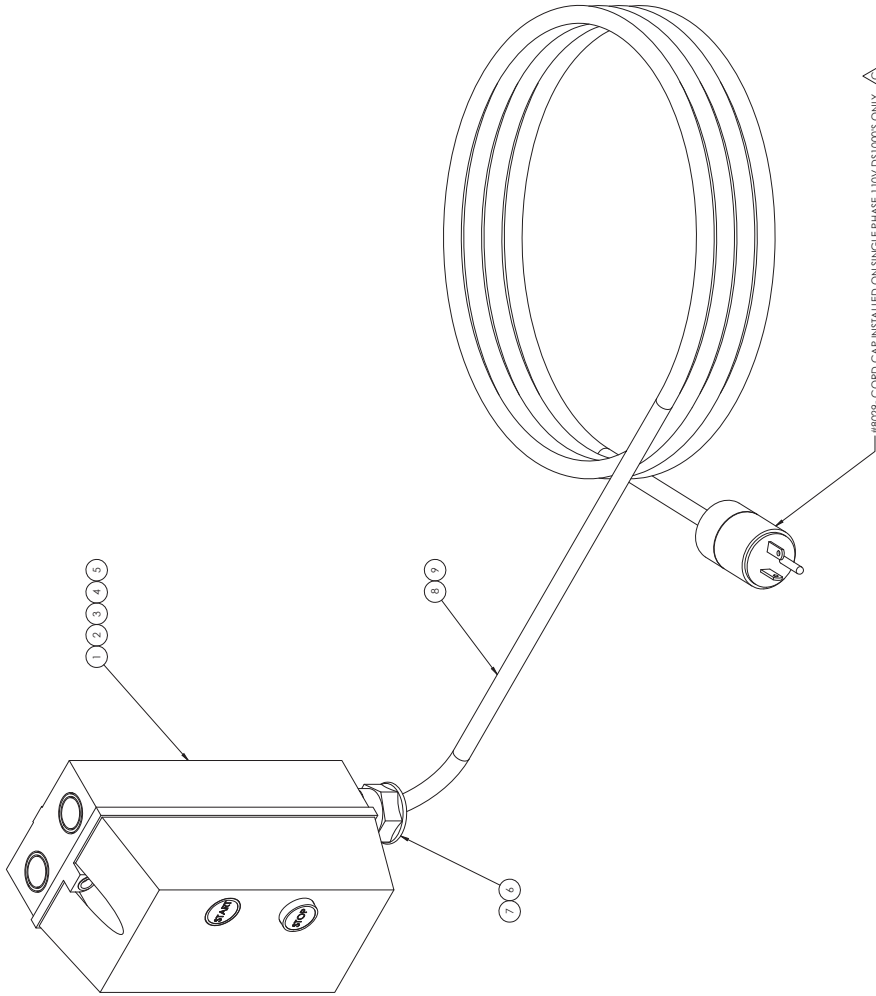


[illegible]

REVISIONS			
ZONE	REV.	DESCRIPTION	DATE
	A	ECO 750	8/29/10
	B	ECO 865	3/19/11
	C	ECO 1300 CHANGED GROUNDING HARDWARE	4/10/2017



REVISIONS			
ZONE	REV.	DESCRIPTION	DATE
	A	ECO 1500-PIED TPO AND ADDED #90035	5/17/2017
	B	ECO 1400-REMOVED CORD CAP	10/20/2017
A4	C	ECO 1400-ADDED CORD CAP	11/09/2017



FOR WIRING DIAGRAM, SEE DWG# 000 K 0172 US

ITEM NO.	PART NO.	DESCRIPTION	DRAWING NO.	QTY.
1	99029	STARTER MAG. 120V/23A/1P		1
2	99031	STARTER MAG. 208-240V/23A/1P		1
3	99032	STARTER MAG. 208-240V/23A/3P		1
4	99033	STARTER MAG. 460V/16A/3P		1
5	99035	STARTER MAG. 460V/23A/3P		1
6	34936	PG-21 CABLE GRIP WITH WIRE CLAMP, POLY		1
7	34936-1	PG-21 POLY CABLE GRIP NUT		1
8	99038	POWER CABLE 12/3 SCOW		30FT
9	20015	POWER CABLE 12/3 SCOW		30FT
10	80079	CORD CAP 125V/23A/1P		1

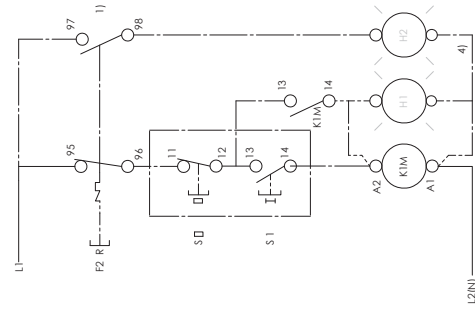
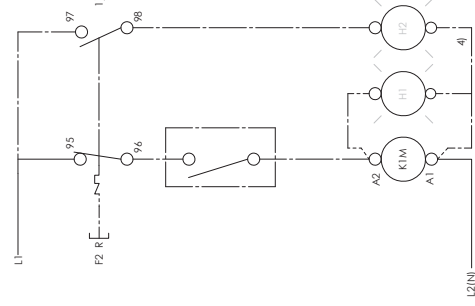
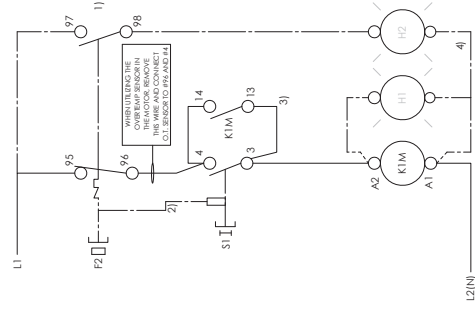
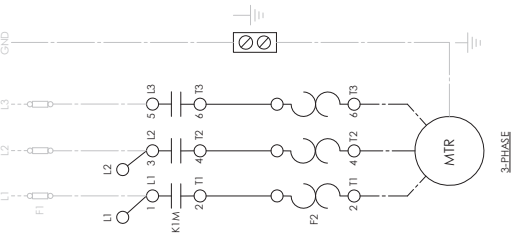
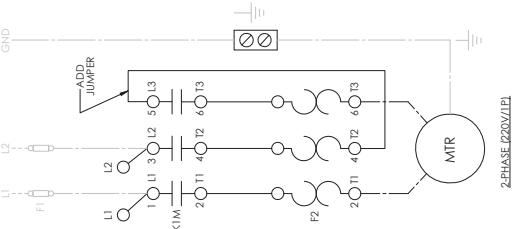
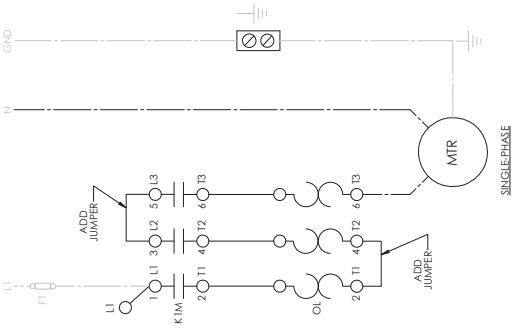
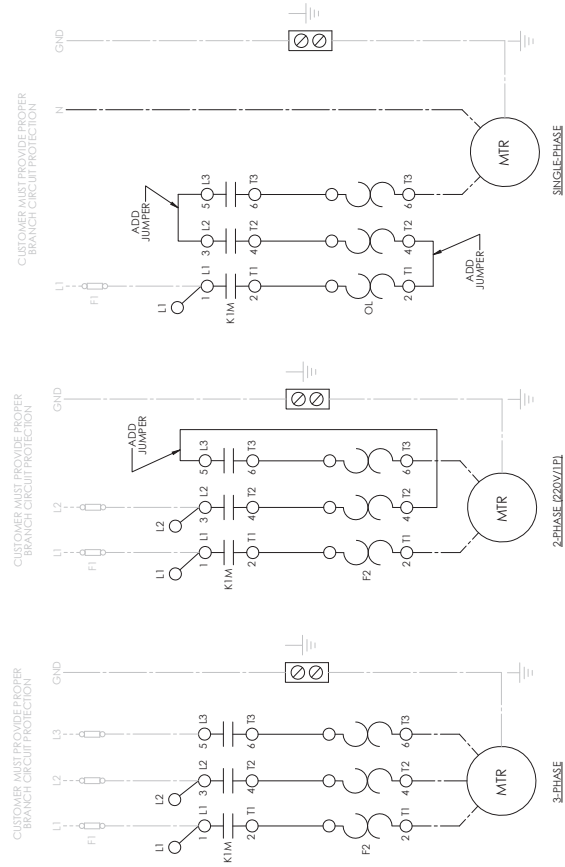
10029- CORD CAP INSTALLED ON SINGLE PHASE 120V D31000'S ONLY	DATE: 12/29/16	SA: Matthew St.
DESIGNED BY: J.P.	DATE: 12/29/16	HOV: M.A. 01040
CHECKED BY: J.P.	DATE: 12/29/16	
APPROVED BY: J.P.	DATE: 12/29/16	
REVISIONS	DATE	DESCRIPTION
1	12/29/16	10029- CORD CAP INSTALLED ON SINGLE PHASE 120V D31000'S ONLY
2	12/29/16	10029- CORD CAP INSTALLED ON SINGLE PHASE 120V D31000'S ONLY
3	12/29/16	10029- CORD CAP INSTALLED ON SINGLE PHASE 120V D31000'S ONLY
4	12/29/16	10029- CORD CAP INSTALLED ON SINGLE PHASE 120V D31000'S ONLY
5	12/29/16	10029- CORD CAP INSTALLED ON SINGLE PHASE 120V D31000'S ONLY
6	12/29/16	10029- CORD CAP INSTALLED ON SINGLE PHASE 120V D31000'S ONLY
7	12/29/16	10029- CORD CAP INSTALLED ON SINGLE PHASE 120V D31000'S ONLY
8	12/29/16	10029- CORD CAP INSTALLED ON SINGLE PHASE 120V D31000'S ONLY
9	12/29/16	10029- CORD CAP INSTALLED ON SINGLE PHASE 120V D31000'S ONLY
10	12/29/16	10029- CORD CAP INSTALLED ON SINGLE PHASE 120V D31000'S ONLY

FOR WIRING DIAGRAM, SEE DWG# 000 K 0172 US

10029- CORD CAP INSTALLED ON SINGLE PHASE 120V D31000'S ONLY	DATE: 12/29/16	SA: Matthew St.
DESIGNED BY: J.P.	DATE: 12/29/16	HOV: M.A. 01040
CHECKED BY: J.P.	DATE: 12/29/16	
APPROVED BY: J.P.	DATE: 12/29/16	
REVISIONS	DATE	DESCRIPTION
1	12/29/16	10029- CORD CAP INSTALLED ON SINGLE PHASE 120V D31000'S ONLY
2	12/29/16	10029- CORD CAP INSTALLED ON SINGLE PHASE 120V D31000'S ONLY
3	12/29/16	10029- CORD CAP INSTALLED ON SINGLE PHASE 120V D31000'S ONLY
4	12/29/16	10029- CORD CAP INSTALLED ON SINGLE PHASE 120V D31000'S ONLY
5	12/29/16	10029- CORD CAP INSTALLED ON SINGLE PHASE 120V D31000'S ONLY
6	12/29/16	10029- CORD CAP INSTALLED ON SINGLE PHASE 120V D31000'S ONLY
7	12/29/16	10029- CORD CAP INSTALLED ON SINGLE PHASE 120V D31000'S ONLY
8	12/29/16	10029- CORD CAP INSTALLED ON SINGLE PHASE 120V D31000'S ONLY
9	12/29/16	10029- CORD CAP INSTALLED ON SINGLE PHASE 120V D31000'S ONLY
10	12/29/16	10029- CORD CAP INSTALLED ON SINGLE PHASE 120V D31000'S ONLY

FOR WIRING DIAGRAM, SEE DWG# 000 K 0172 US





 S.A. Włocławek 21 85-200 Włocławek, ul. 10.01.040	
TITLE: <b>MAGNETIC STARTERS (CAR/CARB SERIES)</b>	
DATE: 11/01/2018 PREPARED BY: P. KUCHARSKI CHECKED: DRAWN: DATE: 11/01/2018 DATE: 11/01/2018	SIZE (DWG. NO.) <b>D</b> 000 K 0172 US REV SHEET 1 OF 1
COMMENTS:	COMMENTS:
GENERAL:	GENERAL:
DETAIL:	DETAIL:
SECTION:	SECTION:
PART:	PART:
ASSEMBLY:	ASSEMBLY:
MATERIAL:	MATERIAL:
FINISH:	FINISH:
TOLERANCES:	TOLERANCES:
DIMENSIONS:	DIMENSIONS:
NOTES:	NOTES:
REVISIONS:	REVISIONS:
APPROVAL:	APPROVAL:
SIGNATURE:	SIGNATURE:
DATE:	DATE:
SCALE:	SCALE:
SHEET:	SHEET:
TOTAL:	TOTAL:
PARTS:	PARTS:
MATERIALS:	MATERIALS:
FINISHES:	FINISHES:
TOLERANCES:	TOLERANCES:
DIMENSIONS:	DIMENSIONS:
NOTES:	NOTES:
REVISIONS:	REVISIONS:
APPROVAL:	APPROVAL:
SIGNATURE:	SIGNATURE:
DATE:	DATE:
SCALE:	SCALE:
SHEET:	SHEET:
TOTAL:	TOTAL:
PARTS:	PARTS:
MATERIALS:	MATERIALS:
FINISHES:	FINISHES:
TOLERANCES:	TOLERANCES:
DIMENSIONS:	DIMENSIONS:
NOTES:	NOTES:
REVISIONS:	REVISIONS:
APPROVAL:	APPROVAL:
SIGNATURE:	SIGNATURE:
DATE:	DATE:
SCALE:	SCALE:
SHEET:	SHEET:
TOTAL:	TOTAL:
PARTS:	PARTS:
MATERIALS:	MATERIALS:
FINISHES:	FINISHES:
TOLERANCES:	TOLERANCES:
DIMENSIONS:	DIMENSIONS:
NOTES:	NOTES:
REVISIONS:	REVISIONS:
APPROVAL:	APPROVAL:
SIGNATURE:	SIGNATURE:
DATE:	DATE:
SCALE:	SCALE:
SHEET:	SHEET:
TOTAL:	TOTAL:
PARTS:	PARTS:
MATERIALS:	MATERIALS:
FINISHES:	FINISHES:
TOLERANCES:	TOLERANCES:
DIMENSIONS:	DIMENSIONS:
NOTES:	NOTES:
REVISIONS:	REVISIONS:
APPROVAL:	APPROVAL:
SIGNATURE:	SIGNATURE:
DATE:	DATE:
SCALE:	SCALE:
SHEET:	SHEET:
TOTAL:	TOTAL:
PARTS:	PARTS:
MATERIALS:	MATERIALS:
FINISHES:	FINISHES:
TOLERANCES:	TOLERANCES:
DIMENSIONS:	DIMENSIONS:
NOTES:	NOTES:
REVISIONS:	REVISIONS:
APPROVAL:	APPROVAL:
SIGNATURE:	SIGNATURE:
DATE:	DATE:
SCALE:	SCALE:
SHEET:	SHEET:
TOTAL:	TOTAL:
PARTS:	PARTS:
MATERIALS:	MATERIALS:
FINISHES:	FINISHES:
TOLERANCES:	TOLERANCES:
DIMENSIONS:	DIMENSIONS:
NOTES:	NOTES:
REVISIONS:	REVISIONS:
APPROVAL:	APPROVAL:
SIGNATURE:	SIGNATURE:
DATE:	DATE:
SCALE:	SCALE:
SHEET:	SHEET:
TOTAL:	TOTAL:
PARTS:	PARTS:
MATERIALS:	MATERIALS:
FINISHES:	FINISHES:
TOLERANCES:	TOLERANCES:
DIMENSIONS:	DIMENSIONS:
NOTES:	NOTES:
REVISIONS:	REVISIONS:
APPROVAL:	APPROVAL:
SIGNATURE:	SIGNATURE:
DATE:	DATE:
SCALE:	SCALE:
SHEET:	SHEET:
TOTAL:	TOTAL:
PARTS:	PARTS:
MATERIALS:	MATERIALS:
FINISHES:	FINISHES:
TOLERANCES:	TOLERANCES:
DIMENSIONS:	DIMENSIONS:
NOTES:	NOTES:
REVISIONS:	REVISIONS:
APPROVAL:	APPROVAL:
SIGNATURE:	SIGNATURE:
DATE:	DATE:
SCALE:	SCALE:
SHEET:	SHEET:
TOTAL:	TOTAL:
PARTS:	PARTS:
MATERIALS:	MATERIALS:
FINISHES:	FINISHES:
TOLERANCES:	TOLERANCES:
DIMENSIONS:	DIMENSIONS:
NOTES:	NOTES:
REVISIONS:	REVISIONS:
APPROVAL:	APPROVAL:
SIGNATURE:	SIGNATURE:
DATE:	DATE:
SCALE:	SCALE:
SHEET:	SHEET:
TOTAL:	TOTAL:
PARTS:	PARTS:
MATERIALS:	MATERIALS:
FINISHES:	FINISHES:
TOLERANCES:	TOLERANCES:
DIMENSIONS:	DIMENSIONS:
NOTES:	NOTES:
REVISIONS:	REVISIONS:
APPROVAL:	APPROVAL:
SIGNATURE:	SIGNATURE:
DATE:	DATE:
SCALE:	SCALE:
SHEET:	SHEET:
TOTAL:	TOTAL:
PARTS:	PARTS:
MATERIALS:	MATERIALS:
FINISHES:	FINISHES:
TOLERANCES:	TOLERANCES:
DIMENSIONS:	DIMENSIONS:
NOTES:	NOTES:
REVISIONS:	REVISIONS:
APPROVAL:	APPROVAL:
SIGNATURE:	SIGNATURE:
DATE:	DATE:
SCALE:	SCALE:
SHEET:	SHEET:
TOTAL:	TOTAL:
PARTS:	PARTS:
MATERIALS:	MATERIALS:
FINISHES:	FINISHES:
TOLERANCES:	TOLERANCES:
DIMENSIONS:	DIMENSIONS:
NOTES:	NOTES:
REVISIONS:	REVISIONS:
APPROVAL:	APPROVAL:
SIGNATURE:	SIGNATURE:
DATE:	DATE:
SCALE:	SCALE:
SHEET:	SHEET:
TOTAL:	TOTAL:
PARTS:	PARTS:
MATERIALS:	MATERIALS:
FINISHES:	FINISHES:
TOLERANCES:	TOLERANCES:
DIMENSIONS:	DIMENSIONS:
NOTES:	NOTES:
REVISIONS:	REVISIONS:
APPROVAL:	APPROVAL:
SIGNATURE:	SIGNATURE:
DATE:	DATE:
SCALE:	SCALE:
SHEET:	SHEET:
TOTAL:	TOTAL:
PARTS:	PARTS:
MATERIALS:	MATERIALS:
FINISHES:	FINISHES:
TOLERANCES:	TOLERANCES:
DIMENSIONS:	DIMENSIONS:
NOTES:	NOTES:
REVISIONS:	REVISIONS:
APPROVAL:	APPROVAL:
SIGNATURE:	SIGNATURE:
DATE:	DATE:
SCALE:	SCALE:
SHEET:	SHEET:
TOTAL:	TOTAL:
PARTS:	PARTS:
MATERIALS:	MATERIALS:
FINISHES:	FINISHES:
TOLERANCES:	TOLERANCES:
DIMENSIONS:	DIMENSIONS:
NOTES:	NOTES:
REVISIONS:	REVISIONS:
APPROVAL:	APPROVAL:
SIGNATURE:	SIGNATURE:
DATE:	DATE:
SCALE:	SCALE:
SHEET:	SHEET:
TOTAL:	TOTAL:
PARTS:	PARTS:
MATERIALS:	MATERIALS:
FINISHES:	FINISHES:
TOLERANCES:	TOLERANCES:
DIMENSIONS:	DIMENSIONS:
NOTES:	NOTES:
REVISIONS:	REVISIONS:
APPROVAL:	APPROVAL:
SIGNATURE:	SIGNATURE:
DATE:	DATE:
SCALE:	SCALE:
SHEET:	SHEET:
TOTAL:	TOTAL:
PARTS:	PARTS:
MATERIALS:	MATERIALS:
FINISHES:	FINISHES:
TOLERANCES:	TOLERANCES:
DIMENSIONS:	DIMENSIONS:
NOTES:	NOTES:
REVISIONS:	REVISIONS:
APPROVAL:	APPROVAL:
SIGNATURE:	SIGNATURE:
DATE:	DATE:
SCALE:	SCALE:
SHEET:	SHEET:
TOTAL:	TOTAL:
PARTS:	PARTS:
MATERIALS:	MATERIALS:
FINISHES:	FINISHES:
TOLERANCES:	TOLERANCES:
DIMENSIONS:	DIMENSIONS:
NOTES:	NOTES:
REVISIONS:	REVISIONS:
APPROVAL:	APPROVAL:
SIGNATURE:	SIGNATURE:
DATE:	DATE:
SCALE:	SCALE:
SHEET:	SHEET:
TOTAL:	TOTAL:
PARTS:	PARTS:
MATERIALS:	MATERIALS:
FINISHES:	FINISHES:
TOLERANCES:	TOLERANCES:
DIMENSIONS:	DIMENSIONS:
NOTES:	NOTES:
REVISIONS:	REVISIONS:
APPROVAL:	APPROVAL:
SIGNATURE:	SIGNATURE:
DATE:	DATE:
SCALE:	SCALE:
SHEET:	SHEET:
TOTAL:	TOTAL:
PARTS:	PARTS:
MATERIALS:	MATERIALS:
FINISHES:	FINISHES:
TOLERANCES:	TOLERANCES:
DIMENSIONS:	DIMENSIONS:
NOTES:	NOTES:
REVISIONS:	REVISIONS:
APPROVAL:	APPROVAL:
SIGNATURE:	SIGNATURE:
DATE:	DATE:
SCALE:	SCALE:
SHEET:	SHEET:
TOTAL:	TOTAL:
PARTS:	PARTS:
MATERIALS:	MATERIALS:
FINISHES:	FINISHES:
TOLERANCES:	TOLERANCES:
DIMENSIONS:	DIMENSIONS:
NOTES:	NOTES:
REVISIONS:	REVISIONS:
APPROVAL:	APPROVAL:
SIGNATURE:	SIGNATURE:
DATE:	DATE:
SCALE:	SCALE:
SHEET:	SHEET:
TOTAL:	TOTAL:
PARTS:	PARTS:
MATERIALS:	MATERIALS:
FINISHES:	FINISHES:
TOLERANCES:	TOLERANCES:
DIMENSIONS:	DIMENSIONS:
NOTES:	NOTES:
REVISIONS:	REVISIONS:
APPROVAL:	APPROVAL:
SIGNATURE:	SIGNATURE:
DATE:	DATE:
SCALE:	SCALE:
SHEET:	SHEET:
TOTAL:	TOTAL:
PARTS:	PARTS:
MATERIALS:	MATERIALS:
FINISHES:	FINISHES:
TOLERANCES:	TOLERANCES:
DIMENSIONS:	DIMENSIONS:
NOTES:	NOTES:
REVISIONS:	REVISIONS:
APPROVAL:	APPROVAL:
SIGNATURE:	SIGNATURE:
DATE:	DATE:
SCALE:	SCALE:
SHEET:	SHEET:
TOTAL:	TOTAL:
PARTS:	PARTS:
MATERIALS:	MATERIALS:
FINISHES:	FINISHES:
TOLERANCES:	TOLERANCES:
DIMENSIONS:	DIMENSIONS:
NOTES:	NOTES:
REVISIONS:	REVISIONS:
APPROVAL:	APPROVAL:
SIGNATURE:	SIGNATURE:
DATE:	DATE:
SCALE:	SCALE:
SHEET:	SHEET:
TOTAL:	TOTAL:
PARTS:	PARTS:
MATERIALS:	MATERIALS:
FINISHES:	FINISHES:
TOLERANCES:	TOLERANCES:
DIMENSIONS:	DIMENSIONS:
NOTES:	NOTES:
REVISIONS:	REVISIONS:
APPROVAL:	APPROVAL:
SIGNATURE:	SIGNATURE:
DATE:	DATE:
SCALE:	SCALE:
SHEET:	SHEET:
TOTAL:	TOTAL:
PARTS:	PARTS:
MATERIALS:	MATERIALS:
FINISHES:	FINISHES:
TOLERANCES:	TOLERANCES:
DIMENSIONS:	DIMENSIONS:
NOTES:	NOTES:
REVISIONS:	REVISIONS:
APPROVAL:	APPROVAL:
SIGNATURE:	SIGNATURE:
DATE:	DATE:
SCALE:	SCALE:
SHEET:	SHEET:
TOTAL:	TOTAL:
PARTS:	PARTS:
MATERIALS:	MATERIALS:
FINISHES:	FINISHES:
TOLERANCES:	TOLERANCES:
DIMENSIONS:	DIMENSIONS:
NOTES:	NOTES:
REVISIONS:	REVISIONS:
APPROVAL:	APPROVAL:
SIGNATURE:	SIGNATURE:
DATE:	DATE:
SCALE:	SCALE:
SHEET:	SHEET:
TOTAL:	TOTAL:
PARTS:	PARTS:
MATERIALS:	MATERIALS:
FINISHES:	FINISHES:
TOLERANCES:	TOLERANCES:
DIMENSIONS:	DIMENSIONS:
NOTES:	NOTES:
REVISIONS:	REVISIONS:
APPROVAL:	APPROVAL:
SIGNATURE:	SIGNATURE:
DATE:	DATE:
SCALE:	SCALE:
SHEET:	SHEET:
TOTAL:	TOTAL:
PARTS:	PARTS:
MATERIALS:	MATERIALS:
FINISHES:	FINISHES:
TOLERANCES:	TOLERANCES:
DIMENSIONS:	DIMENSIONS:
NOTES:	NOTES:
REVISIONS:	REVISIONS:
APPROVAL:	APPROVAL:
SIGNATURE:	SIGNATURE:
DATE:	DATE:
SCALE:	SCALE:
SHEET:	SHEET:
TOTAL:	TOTAL:
PARTS:	PARTS:
MATERIALS:	MATERIALS:
FINISHES:	FINISHES:
TOLERANCES:	TOLERANCES:
DIMENSIONS:	DIMENSIONS:
NOTES:	NOTES:
REVISIONS:	REVISIONS:
APPROVAL:	APPROVAL:
SIGNATURE:	SIGNATURE:
DATE:	DATE:
SCALE:	SCALE:
SHEET:	SHEET:
TOTAL:	TOTAL:
PARTS:	PARTS:
MATERIALS:	MATERIALS:
FINISHES:	FINISHES:
TOLERANCES:	TOLERANCES:
DIMENSIONS:	DIMENSIONS:
NOTES:	NOTES:
REVISIONS:	REVISIONS:
APPROVAL:	APPROVAL:
SIGNATURE:	SIGNATURE:
DATE:	DATE:
SCALE:	SCALE:
SHEET:	SHEET:
TOTAL:	TOTAL:
PARTS:	PARTS:
MATERIALS:	MATERIALS:
FINISHES:	FINISHES:
TOLERANCES:	TOLERANCES:
DIMENSIONS:	DIMENSIONS:
NOTES:	NOTES:
REVISIONS:	REVISIONS:
APPROVAL:	APPROVAL:
SIGNATURE:	SIGNATURE:
DATE:	DATE:
SCALE:	SCALE:
SHEET:	SHEET:
TOTAL:	TOTAL:
PARTS:	PARTS:
MATERIALS:	MATERIALS:
FINISHES:	FINISHES:
TOLERANCES:	TOLERANCES:
DIMENSIONS:	DIMENSIONS:
NOTES:	NOTES:
REVISIONS:	REVISIONS:
APPROVAL:	APPROVAL:
SIGNATURE:	SIGNATURE:
DATE:	DATE:
SCALE:	SCALE:
SHEET:	SHEET:
TOTAL:	TOTAL:
PARTS:	PARTS:
MATERIALS:	MATERIALS:
FINISHES:	FINISHES:
TOLERANCES:	TOLERANCES:
DIMENSIONS:	DIMENSIONS:
NOTES:	NOTES:
REVISIONS:	REVISIONS:
APPROVAL:	APPROVAL:
SIGNATURE:	SIGNATURE:
DATE:	DATE:
SCALE:	SCALE:
SHEET:	SHEET:
TOTAL:	TOTAL:
PARTS:	PARTS:
MATERIALS:	MATERIALS:
FINISHES:	FINISHES:
TOLERANCES:	TOLERANCES:
DIMENSIONS:	DIMENSIONS:
NOTES:	NOTES:
REVISIONS:	REVISIONS:
APPROVAL:	APPROVAL:
SIGNATURE:	SIGNATURE:
DATE:	DATE:
SCALE:	SCALE:
SHEET:	SHEET:
TOTAL:	TOTAL:
PARTS:	PARTS:
MATERIALS:	MATERIALS:
FINISHES:	FINISHES:
TOLERANCES:	TOLERANCES:
DIMENSIONS:	DIMENSIONS:
NOTES:	NOTES:
REVISIONS:	REVISIONS:
APPROVAL:	APPROVAL:
SIGNATURE:	SIGNATURE:
DATE:	DATE:
SCALE:	SCALE:
SHEET:	SHEET:
TOTAL:	TOTAL:
PARTS:	PARTS:
MATERIALS:	MATERIALS:
FINISHES:	FINISHES:
TOLERANCES:	TOLERANCES:
DIMENSIONS:	DIMENSIONS:
NOTES:	NOTES:
REVISIONS:	REVISIONS:
APPROVAL:	APPROVAL:
SIGNATURE:	SIGNATURE:
DATE:	DATE:
SCALE:	SCALE:
SHEET:	SHEET:
TOTAL:	TOTAL:
PARTS:	PARTS:
MATERIALS:	MATERIALS:
FINISHES:	FINISHES:
TOLERANCES:	TOLERANCES:
DIMENSIONS:	DIMENSIONS:
NOTES:	NOTES:
REVISIONS:	REVISIONS:
APPROVAL:	APPROVAL:
SIGNATURE:	SIGNATURE:
DATE:	DATE:
SCALE:	SCALE:
SHEET:	SHEET:
TOTAL:	TOTAL:
PARTS:	PARTS:
MATERIALS:	MATERIALS:
FINISHES:	FINISHES:
TOLERANCES:	TOLERANCES:
DIMENSIONS:	DIMENSIONS:
NOTES:	NOTES:
REVISIONS:	REVISIONS:
APPROVAL:	APPROVAL:
SIGNATURE:	SIGNATURE:
DATE:	DATE:
SCALE:	SCALE:
SHEET:	SHEET:
TOTAL:	TOTAL:
PARTS:	PARTS:
MATERIALS:	MATERIALS:
FINISHES:	FINISHES:
TOLERANCES:	TOLERANCES:
DIMENSIONS:	DIMENSIONS:
NOTES:	NOTES:
REVISIONS:	REVISIONS:
APPROVAL:	APPROVAL:
SIGNATURE:	SIGNATURE:
DATE:	DATE:
SCALE:	SCALE:
SHEET:	SHEET:
TOTAL:	TOTAL:
PARTS:	PARTS:
MATERIALS:	MATERIALS:
FINISHES:	FINISHES:
TOLERANCES:	TOLERANCES:
DIMENSIONS:	DIMENSIONS:
NOTES:	NOTES:
REVISIONS:	REVISIONS:
APPROVAL:	APPROVAL:
SIGNATURE:	SIGNATURE:
DATE:	DATE:
SCALE:	SCALE:
SHEET:	SHEET:
TOTAL:	TOTAL:
PARTS:	PARTS:
MATERIALS:	MATERIALS:
FINISHES:	FINISHES:
TOLERANCES:	TOLERANCES:
DIMENSIONS:	DIMENSIONS:
NOTES:	NOTES:
REVISIONS:	REVISIONS:
APPROVAL:	APPROVAL:
SIGNATURE:	SIGNATURE:
DATE:	DATE:
SCALE:	SCALE:
SHEET:	SHEET:
TOTAL:	TOTAL:
PARTS:	PARTS:
MATERIALS:	MATERIALS:
FINISHES:	FINISHES:
TOLERANCES:	TOLERANCES:
DIMENSIONS:	DIMENSIONS:
NOTES:	NOTES:
REVISIONS:	REVISIONS:
APPROVAL:	APPROVAL:
SIGNATURE:	SIGNATURE:
DATE:	DATE:
SCALE:	SCALE:
SHEET:	SHEET:
TOTAL:	TOTAL:
PARTS:	PARTS:
MATERIALS:	MATERIALS:
FINISHES:	FINISHES:
TOLERANCES:	TOLERANCES:
DIMENSIONS:	DIMENSIONS:
NOTES:	NOTES:
REVISIONS:	REVISIONS:
APPROVAL:	APPROVAL:
SIGNATURE:	SIGNATURE:
DATE:	DATE:
SCALE:	SCALE:
SHEET:	SHEET:
TOTAL:	TOTAL:
PARTS:	PARTS:
MATERIALS:	MATERIALS:
FINISHES:	FINISHES:
TOLERANCES:	TOLERANCES:
DIMENSIONS:	DIMENSIONS:
NOTES:	NOTES:
REVISIONS:	REVISIONS:
APPROVAL:	APPROVAL:
SIGNATURE:	SIGNATURE:
DATE:	DATE:
SCALE:	SCALE:
SHEET:	SHEET:
TOTAL:	TOTAL:
PARTS:	PARTS:
MATERIALS:	MATERIALS:
FINISHES:	FINISHES:
TOLERANCES:	TOLERANCES:
DIMENSIONS:	DIMENSIONS:
NOTES:	NOTES:
REVISIONS:	REVISIONS:
APPROVAL:	APPROVAL:
SIGNATURE:	SIGNATURE:
DATE:	DATE:
SCALE:	SCALE:
SHEET:	SHEET:
TOTAL:	TOTAL:
PARTS:	PARTS:
MATERIALS:	MATERIALS:
FINISHES:	FINISHES:
TOLERANCES:	TOLERANCES:
DIMENSIONS:	DIMENSIONS:
NOTES:	NOTES:
REVISIONS:	REVISIONS:
APPROVAL:	APPROVAL:
SIGNATURE:	SIGNATURE:
DATE:	DATE:
SCALE:	SCALE:
SHEET:	SHEET:
TOTAL:	TOTAL:
PARTS:	PARTS:
MATERIALS:	MATERIALS:
FINISHES:	FINISHES:
TOLERANCES:	TOLERANCES:
DIMENSIONS:	DIMENSIONS:
NOTES:	NOTES:
REVISIONS:	REVISIONS:
APPROVAL:	APPROVAL:
SIGNATURE:	SIGNATURE:
DATE:	DATE:
SCALE:	SCALE:
SHEET:	SHEET:
TOTAL:	TOTAL:
PARTS:	PARTS:
MATERIALS:	MATERIALS:
FINISHES:	FINISHES:
TOLERANCES:	TOLERANCES:
DIMENSIONS:	DIMENSIONS:
NOTES:	NOTES:
REVISIONS:	REVISIONS:
APPROVAL:	APPROVAL:
SIGNATURE:	SIGNATURE:
DATE:	DATE:
SCALE:	SCALE:
SHEET:	SHEET:
TOTAL:	TOTAL:
PARTS:	PARTS:
MATERIALS:	MATERIALS:
FINISHES:	FINISHES:
TOLERANCES:	TOLERANCES:
DIMENSIONS:	DIMENSIONS:
NOTES:	NOTES:
REVISIONS:	REVISIONS:
APPROVAL:	APPROVAL:
SIGNATURE:	SIGNATURE:
DATE:	DATE:
SCALE:	SCALE:
SHEET:	SHEET:
TOTAL:	TOTAL:
PARTS:	PARTS:
MATERIALS:	MATERIALS:
FINISHES:	FINISHES:
TOLERANCES:	TOLERANCES:
DIMENSIONS:	DIMENSIONS:
NOTES:	NOTES:
REVISIONS:	REVISIONS:
APPROVAL:	APPROVAL:
SIGNATURE:	SIGNATURE:
DATE:	DATE:
SCALE:	SCALE:
SHEET:	SHEET:
TOTAL:	TOTAL:
PARTS:	PARTS: